

**CONSTRUCT TAXIWAY D AND ARFF ACCESS ROAD**

**SCHEDULE I (FEDERAL):**  
CONSTRUCT TAXIWAY D, ARFF ACCESS ROAD, AIRFIELD ELECTRICAL, DRAINAGE, AND PAVEMENT MARKINGS

**SCHEDULE II (NON-AIP):**  
NON-AIP ITEMS

**LEGEND:**

- PHASE D1 - 28 DAYS
- DEMOLITION PAVEMENT
- REMOVED PAVEMENT
- FINISHED PAVEMENT
- PHASE WORK LIMITS
- X LIGHTED RUNWAY CLOSURE "X"
- X TAXIWAY CLOSURE "X"
- TYPE 1 LOW PROFILE BARRICADE
- ALTERNATING VERTICAL PANEL AND LOW PROFILE BARRICADES
- TAXIING ROUTES
- TEMPORARY BACK TAXI EDGE REFLECTORS
- OPEN RUNWAY
- CLOSED RUNWAY
- BLACKOUT MARKINGS
- CONTRACTOR HAUL ROUTE
- Y GATE GUARD REQUIRED
- F FLAGGER
- TSA - TAXIWAY SAFETY AREA
- TOFA - TAXIWAY OBJECT FREE AREA
- RSA - RUNWAY SAFETY AREA
- ROFA - RUNWAY OBJECT FREE AREA

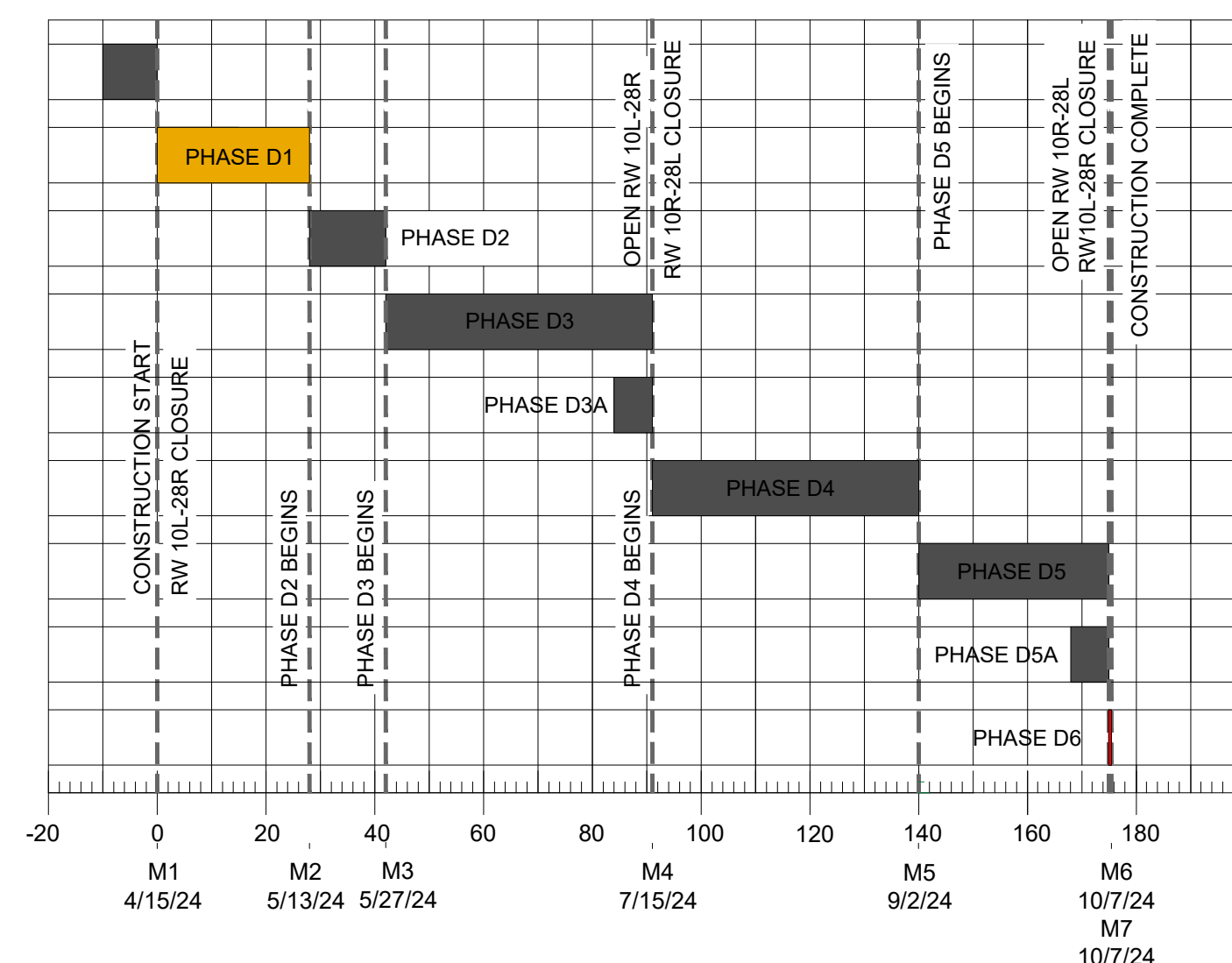
**PHASING NOTES:**

1. CONTRACTOR TO USE GATE 30 FOR PHASES D1-D2 OF TAXIWAY D CONSTRUCTION.
2. CONTRACTOR TO USE GATE 650 FOR PHASES D3-D5 OF TAXIWAY D CONSTRUCTION.
3. SEE SHEET C008 FOR ADDITIONAL NOTES.

**OPERATIONAL LIMITATIONS:**

- OPEN**
1. TAXIWAY A
  2. TAXIWAY G
  3. TAXIWAY E
  4. TAXIWAY J
  5. TAXIWAY K
  6. TAXIWAY F
  7. TAXIWAY B
  8. TAXIWAY H
  9. RUNWAY 10R-28L
  10. TAXIWAY W
  11. RUNWAY 10L-28R
  12. TAXIWAY A4
  13. TAXIWAY D
  14. TAXIWAY C
  15. TAXIWAY M
  16. TAXIWAY B1
  17. TAXIWAY B2
- CLOSED**
1. TAXIWAY A2
  2. TAXIWAY A3
  3. TAXIWAY A FROM A1 TO A4

**TAXIWAY D PHASING SCHEDULE**



**RUNWAY 10L-28R CLOSED 91.5 DAYS**  
**RUNWAY 10R-28L CLOSED 84 DAYS**

**REVISIONS**

NO.	DESCRIPTION	DATE

DATE ISSUED: DECEMBER 8, 2023  
REVIEWED BY: GPR  
DRAWN BY: MRC  
DESIGNED BY: JAC  
RS&H PROJECT NUMBER  
1025-1927-011

© 2023 RS&H, INC.  
SHEET TITLE

**PHASING PLAN**  
**PHASE D1**

DRAWING NUMBER  
**C011**

**90% DESIGN**