



FEDERAL AVIATION ADMINISTRATION



**FLIGHT ADVISORY  
GPS INTERFERENCE TESTING**

**PATUXENT RIVER (PAXRVR) 23-02**

**22 May – 16 June  
Patuxent River, MD**

GPS testing is scheduled as follows and may result in unreliable or unavailable GPS signal.

A. Centered at 381539N0762609W or the RIC VOR 051 degree radial at 62 NM.

B. Dates and times (**Dates and times are based on GMT (Z):**)

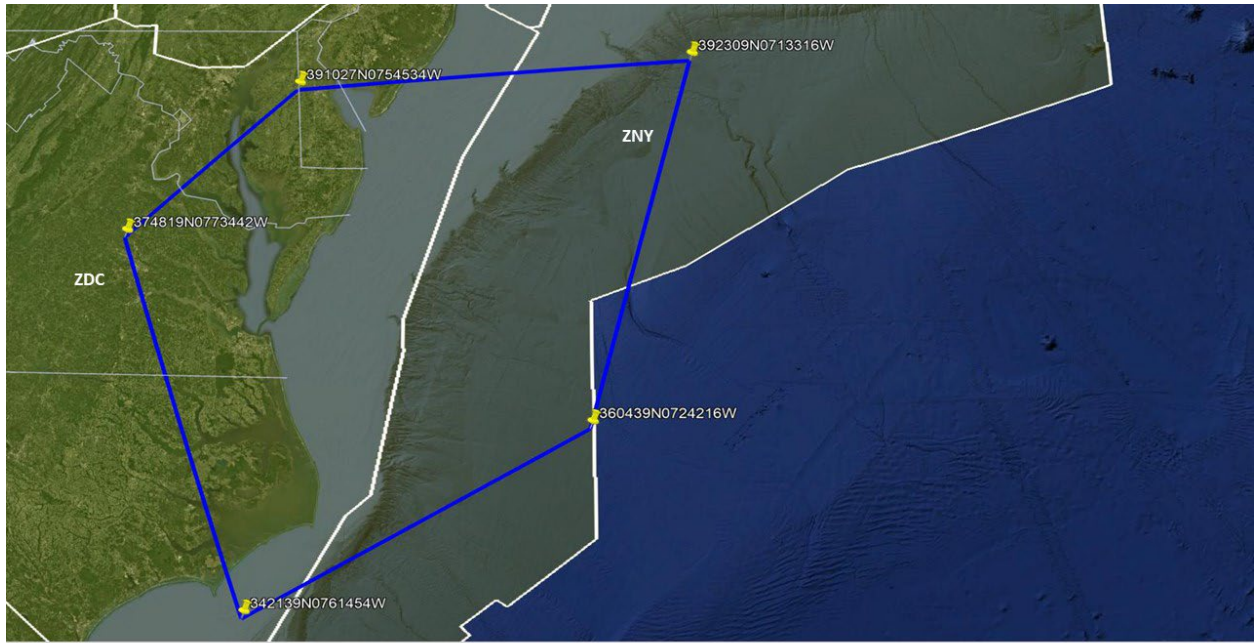
22 – 26 MAY 23	DLY	1100Z – 2200Z
29 MAY – 02 JUN 23	DLY	1100Z – 2200Z
05 – 09 JUN 23	DLY	1100Z – 2200Z
12 – 16 JUN 23	DLY	1100Z – 2200Z

C. Duration: Each event may last the entire requested period.

D. NOTAM INFO: NAV GPS (PAXRVR GPS 23-02) (INCLUDING WAAS, GBAS, AND ADS-B) MAY NOT BE AVBL WI AN AREA DEFINED AS: 391027N0754534W TO 374819N0773442W TO 342139N0761454W TO 360439N0724216W TO 392309N0713316W TO 391027N0754534W, SFC-UNL

E. Pilots are encouraged to report anomalies in accordance with the Aeronautical Information Manual (AIM) paragraphs 1-1-13 and 5-3-3.

**The NOTAMs discussed in this advisory may change with little or no notice. Pilots are advised to check NOTAMs frequently for possible changes prior to operations in the area. NOTAMs will be published at least 24 hours in advance of any GPS tests.**



PAXRVR GPS 23-02  
GPS INTERFERENCE TESTING

## PAXRVR GPS 23-02 GPS INTERFERENCE TESTING