

DEPARTMENT OF TRANSPORTATION

Federal Aviation Administration

Allentown Tower
135 Fashion Drive South
Allentown, PA 18109

Issued: 07/14/2023 1527 (UTC)
Allentown Tower

Effective: 07/15/2023 1200 (UTC)
Letter to Airmen: LTA-ABE-14

Subject: Airport Diagram Changes and Signage

Cancellation: 08/30/2024 1200 (UTC)

The Lehigh Valley International Airport, Allentown, PA (ABE), is undergoing a construction project in which the Taxiway Alpha "A" connectors to Runway 06/24 will be renamed. The project is expected to begin on July 14, 2023 and take approximately 3 months to complete.

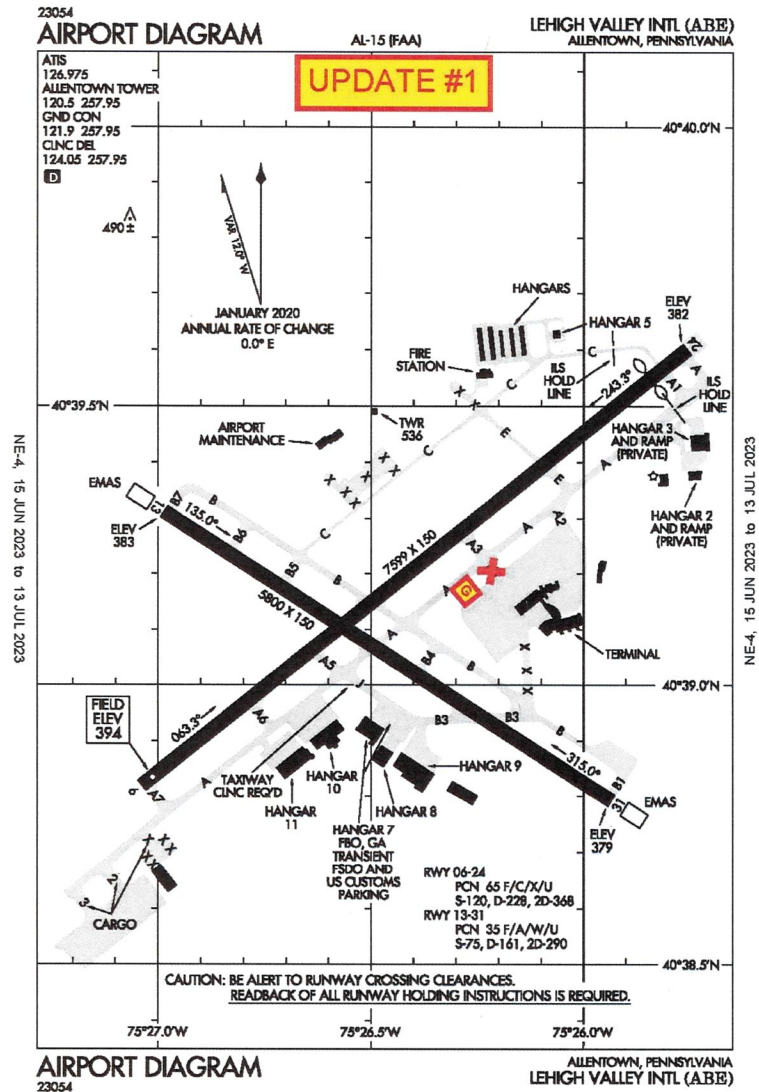
As the project progresses, each sign on the airport will be replaced to indicate the new name of each taxiway. The phases are expected to proceed as follows:

Update #	Old Taxiway Designator	New Taxiway Designator
1	A3 (between main ramp and A)	Moved to SW end of Ramp and Renamed "G"
2	A3	A4
3	E (between RY06/24 & A)	A3
4	A2	F
5	A1	A2
6	A	A1

New airport diagrams for each phase are attached to this Letter to Airmen. Please use extreme caution when taxiing on the movement areas. Ensure the route instructions from air traffic are understood, and ask for progressive taxi instructions, if necessary. A NOTAM regarding airport signage will be issued by the airport authority and will be placed on the ATIS.

Once all updates are complete, a new airport diagram will be submitted for publishing.

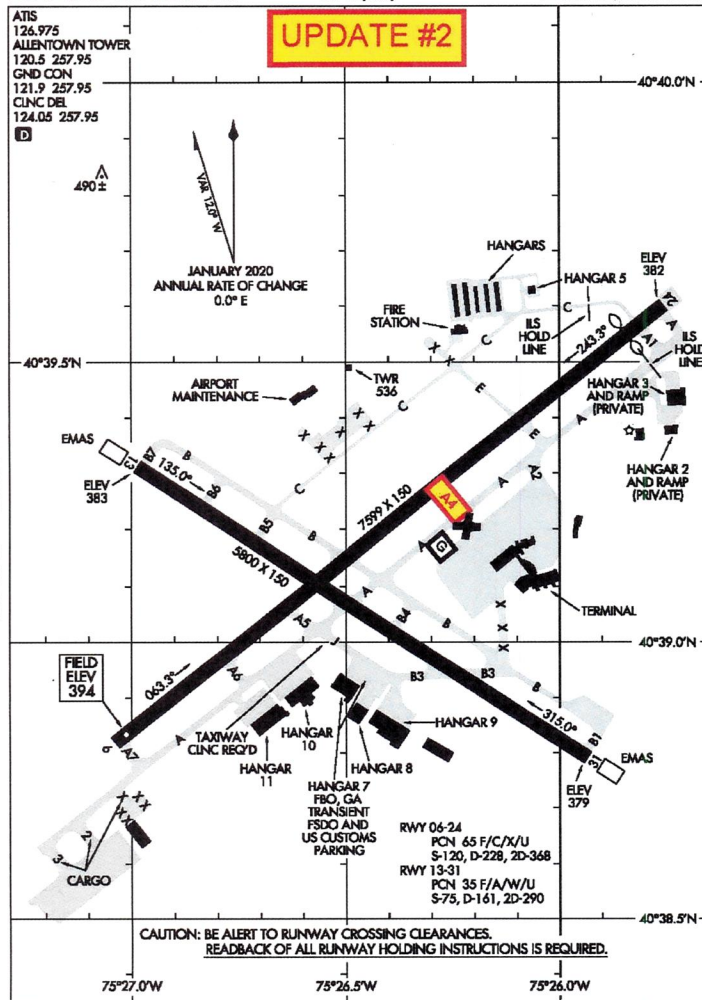
Shannon K McGinley
Air Traffic Manager, Allentown Tower



23054

AIRPORT DIAGRAM

AL-15 (FAA)

LEHIGH VALLEY INTL (ABE)
ALLENTOWN, PENNSYLVANIA

NE-4, 15 JUN 2023 to 13 JUL 2023

NE-4, 15 JUN 2023 to 13 JUL 2023

AIRPORT DIAGRAM

23054

ALLENTOWN, PENNSYLVANIA
LEHIGH VALLEY INTL (ABE)

LEHIGH VALLEY INTL (ABE)
ALLENTOWN, PENNSYLVANIA

UPDATE #3

ATIS	126.975
ALLENTOWN TOWER	120.5 257.95
GND CON	121.9 257.95
CLNC DEL	124.05 257.95

 490 ± 10

JANUARY 2020
ANNUAL RATE OF CHANGE
+22.5

-40°39.5'N

-40°40.0'N

NE-4, 15 JUN 2023 to 13 JUL 2023

NE-4, 15 JUN 2023 to 13 JUL 2023

Diagram illustrating the runway crossing at Fort Belvoir, showing Runway 1350 and Runway 7599 intersecting. The diagram includes various airport facilities such as Hangar 1 through Hangar 11, the Terminal, Airport Maintenance, and Cargo areas. It also displays taxiway and ramp layouts, along with specific runway dimensions and elevations.

Runway Dimensions and Orientation:

- Runway 1350: 5800 X 130, 135.0°
- Runway 7599: 1520, 75.99 X 1520, 315.0°

Key Features and Labels:

- Runway 1350:** ELEV 383, EMAS, FIELD ELEV 394, TAXIWAY CLNC RCDY, HANGAR 11, HANGAR 10, HANGAR 7 FBO, GA TRANSIENT FSDO AND US CUSTOMS PARKING, HANGAR 8, HANGAR 9, HANGAR 3 AND RAMP (PRIVATE), HANGAR 2 AND RAMP (PRIVATE), TERMINAL, EMAS, ELEV 379.
- Runway 7599:** TWIR 536, HANGAR 1, HANGAR 2, HANGAR 3, HANGAR 4, HANGAR 5, HANGAR 6, HANGAR 7, HANGAR 8, HANGAR 9, HANGAR 10, HANGAR 11, HANGAR 12, HANGAR 13, HANGAR 14, HANGAR 15, HANGAR 16, HANGAR 17, HANGAR 18, HANGAR 19, HANGAR 20, HANGAR 21, HANGAR 22, HANGAR 23, HANGAR 24, HANGAR 25, HANGAR 26, HANGAR 27, HANGAR 28, HANGAR 29, HANGAR 30, HANGAR 31, HANGAR 32, HANGAR 33, HANGAR 34, HANGAR 35, HANGAR 36, HANGAR 37, HANGAR 38, HANGAR 39, HANGAR 40, HANGAR 41, HANGAR 42, HANGAR 43, HANGAR 44, HANGAR 45, HANGAR 46, HANGAR 47, HANGAR 48, HANGAR 49, HANGAR 50, HANGAR 51, HANGAR 52, HANGAR 53, HANGAR 54, HANGAR 55, HANGAR 56, HANGAR 57, HANGAR 58, HANGAR 59, HANGAR 60, HANGAR 61, HANGAR 62, HANGAR 63, HANGAR 64, HANGAR 65, HANGAR 66, HANGAR 67, HANGAR 68, HANGAR 69, HANGAR 70, HANGAR 71, HANGAR 72, HANGAR 73, HANGAR 74, HANGAR 75, HANGAR 76, HANGAR 77, HANGAR 78, HANGAR 79, HANGAR 80, HANGAR 81, HANGAR 82, HANGAR 83, HANGAR 84, HANGAR 85, HANGAR 86, HANGAR 87, HANGAR 88, HANGAR 89, HANGAR 90, HANGAR 91, HANGAR 92, HANGAR 93, HANGAR 94, HANGAR 95, HANGAR 96, HANGAR 97, HANGAR 98, HANGAR 99, HANGAR 100, HANGAR 101, HANGAR 102, HANGAR 103, HANGAR 104, HANGAR 105, HANGAR 106, HANGAR 107, HANGAR 108, HANGAR 109, HANGAR 110, HANGAR 111, HANGAR 112, HANGAR 113, HANGAR 114, HANGAR 115, HANGAR 116, HANGAR 117, HANGAR 118, HANGAR 119, HANGAR 120, HANGAR 121, HANGAR 122, HANGAR 123, HANGAR 124, HANGAR 125, HANGAR 126, HANGAR 127, HANGAR 128, HANGAR 129, HANGAR 130, HANGAR 131, HANGAR 132, HANGAR 133, HANGAR 134, HANGAR 135, HANGAR 136, HANGAR 137, HANGAR 138, HANGAR 139, HANGAR 140, HANGAR 141, HANGAR 142, HANGAR 143, HANGAR 144, HANGAR 145, HANGAR 146, HANGAR 147, HANGAR 148, HANGAR 149, HANGAR 150, HANGAR 151, HANGAR 152, HANGAR 153, HANGAR 154, HANGAR 155, HANGAR 156, HANGAR 157, HANGAR 158, HANGAR 159, HANGAR 160, HANGAR 161, HANGAR 162, HANGAR 163, HANGAR 164, HANGAR 165, HANGAR 166, HANGAR 167, HANGAR 168, HANGAR 169, HANGAR 170, HANGAR 171, HANGAR 172, HANGAR 173, HANGAR 174, HANGAR 175, HANGAR 176, HANGAR 177, HANGAR 178, HANGAR 179, HANGAR 180, HANGAR 181, HANGAR 182, HANGAR 183, HANGAR 184, HANGAR 185, HANGAR 186, HANGAR 187, HANGAR 188, HANGAR 189, HANGAR 190, HANGAR 191, HANGAR 192, HANGAR 193, HANGAR 194, HANGAR 195, HANGAR 196, HANGAR 197, HANGAR 198, HANGAR 199, HANGAR 200, HANGAR 201, HANGAR 202, HANGAR 203, HANGAR 204, HANGAR 205, HANGAR 206, HANGAR 207, HANGAR 208, HANGAR 209, HANGAR 210, HANGAR 211, HANGAR 212, HANGAR 213, HANGAR 214, HANGAR 215, HANGAR 216, HANGAR 217, HANGAR 218, HANGAR 219, HANGAR 220, HANGAR 221, HANGAR 222, HANGAR 223, HANGAR 224, HANGAR 225, HANGAR 226, HANGAR 227, HANGAR 228, HANGAR 229, HANGAR 230, HANGAR 231, HANGAR 232, HANGAR 233, HANGAR 234, HANGAR 235, HANGAR 236, HANGAR 237, HANGAR 238, HANGAR 239, HANGAR 240, HANGAR 241, HANGAR 242, HANGAR 243, HANGAR 244, HANGAR 245, HANGAR 246, HANGAR 247, HANGAR 248, HANGAR 249, HANGAR 250, HANGAR 251, HANGAR 252, HANGAR 253, HANGAR 254, HANGAR 255, HANGAR 256, HANGAR 257, HANGAR 258, HANGAR 259, HANGAR 260, HANGAR 261, HANGAR 262, HANGAR 263, HANGAR 264, HANGAR 265, HANGAR 266, HANGAR 267, HANGAR 268, HANGAR 269, HANGAR 270, HANGAR 271, HANGAR 272, HANGAR 273, HANGAR 274, HANGAR 275, HANGAR 276, HANGAR 277, HANGAR 278, HANGAR 279, HANGAR 280, HANGAR 281, HANGAR 282, HANGAR 283, HANGAR 284, HANGAR 285, HANGAR 286, HANGAR 287, HANGAR 288, HANGAR 289, HANGAR 290, HANGAR 291, HANGAR 292, HANGAR 293, HANGAR 294, HANGAR 295, HANGAR 296, HANGAR 297, HANGAR 298, HANGAR 299, HANGAR 300, HANGAR 301, HANGAR 302, HANGAR 303, HANGAR 304, HANGAR 305, HANGAR 306, HANGAR 307, HANGAR 308, HANGAR 309, HANGAR 310, HANGAR 311, HANGAR 312, HANGAR 313, HANGAR 314, HANGAR 315, HANGAR 316, HANGAR 317, HANGAR 318, HANGAR 319, HANGAR 320, HANGAR 321, HANGAR 322, HANGAR 323, HANGAR 324, HANGAR 325, HANGAR 326, HANGAR 327, HANGAR 328, HANGAR 329, HANGAR 330, HANGAR 331, HANGAR 332, HANGAR 333, HANGAR 334, HANGAR 335, HANGAR 336, HANGAR 337, HANGAR 338, HANGAR 339, HANGAR 340, HANGAR 341, HANGAR 342, HANGAR 343, HANGAR 344, HANGAR 345, HANGAR 346, HANGAR 347, HANGAR 348, HANGAR 349, HANGAR 350, HANGAR 351, HANGAR 352, HANGAR 353, HANGAR 354, HANGAR 355, HANGAR 356, HANGAR 357, HANGAR 358, HANGAR 359, HANGAR 360, HANGAR 361, HANGAR 362, HANGAR 363, HANGAR 364, HANGAR 365, HANGAR 366, HANGAR 367, HANGAR 368, HANGAR 369, HANGAR 370, HANGAR 371, HANGAR 372, HANGAR 373, HANGAR 374, HANGAR 375, HANGAR 376, HANGAR 377, HANGAR 378, HANGAR 379, HANGAR 380, HANGAR 381, HANGAR 382, HANGAR 383, HANGAR 384, HANGAR 385, HANGAR 386, HANGAR 387, HANGAR 388, HANGAR 389, HANGAR 390, HANGAR 391, HANGAR 392, HANGAR 393, HANGAR 394, HANGAR 395, HANGAR 396, HANGAR 397, HANGAR 398, HANGAR 399, HANGAR 400, HANGAR 401, HANGAR 402, HANGAR 403, HANGAR 404, HANGAR 405, HANGAR 406, HANGAR 407, HANGAR 408, HANGAR 409, HANGAR 410, HANGAR 411, HANGAR 412, HANGAR 413, HANGAR 414, HANGAR 415, HANGAR 416, HANGAR 417, HANGAR 418, HANGAR 419, HANGAR 420, HANGAR 421, HANGAR 422, HANGAR 423, HANGAR 424, HANGAR 425, HANGAR 426, HANGAR 427, HANGAR 428, HANGAR 429, HANGAR 430, HANGAR 431, HANGAR 432, HANGAR 433, HANGAR 434, HANGAR 435, HANGAR 436, HANGAR 437, HANGAR 438, HANGAR 439, HANGAR 440, HANGAR 441, HANGAR 442, HANGAR 443, HANGAR 444, HANGAR 445, HANGAR 446, HANGAR 447, HANGAR 448, HANGAR 449, HANGAR 450, HANGAR 451, HANGAR 452, HANGAR 453, HANGAR 454, HANGAR 455, HANGAR 456, HANGAR 457, HANGAR 458, HANGAR 459, HANGAR 460, HANGAR 461, HANGAR 462, HANGAR 463, HANGAR 464, HANGAR 465, HANGAR 466, HANGAR 467, HANGAR 468, HANGAR 469, HANG

**CAUTION: BE ALERT TO RUNWAY CROSSING CLEARANCES.
READBACK OF ALL RUNWAY HOLDING INSTRUCTIONS IS REQUIRED.**

AIRPORT DIAGRAM

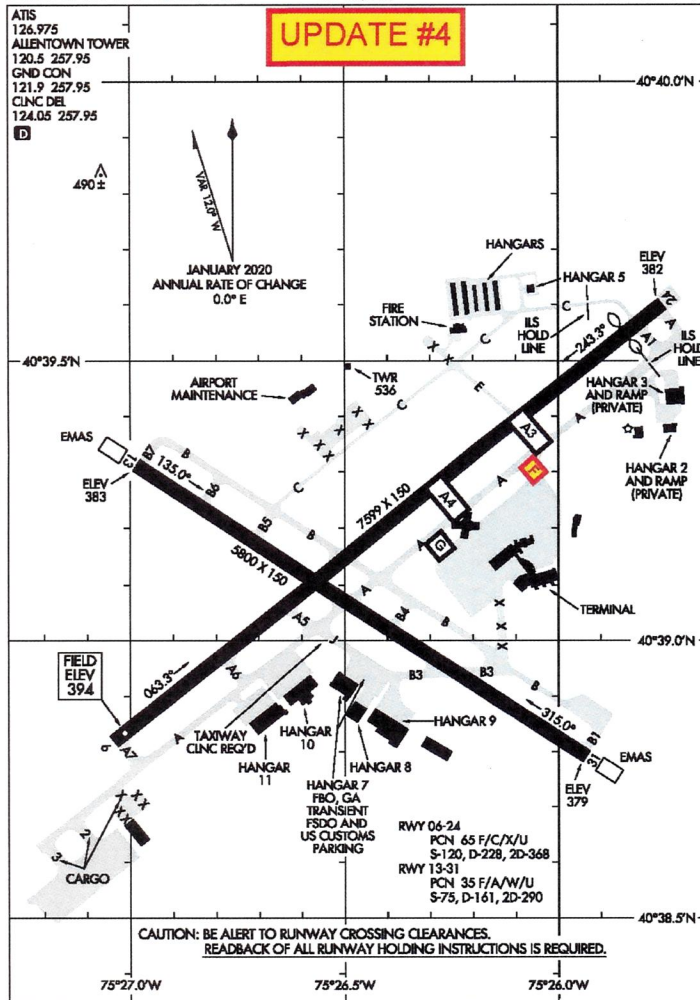
23054

ALLENTOWN, PENNSYLVANIA
LEHIGH VALLEY INTL (ABE)

23054

AIRPORT DIAGRAM

AL-15 (FAA)

LEHIGH VALLEY INTL (ABE)
ALLENTOWN, PENNSYLVANIA

NE-4, 15 JUN 2023 to 13 JUL 2023

NE-4, 15 JUN 2023 to 13 JUL 2023

AIRPORT DIAGRAM

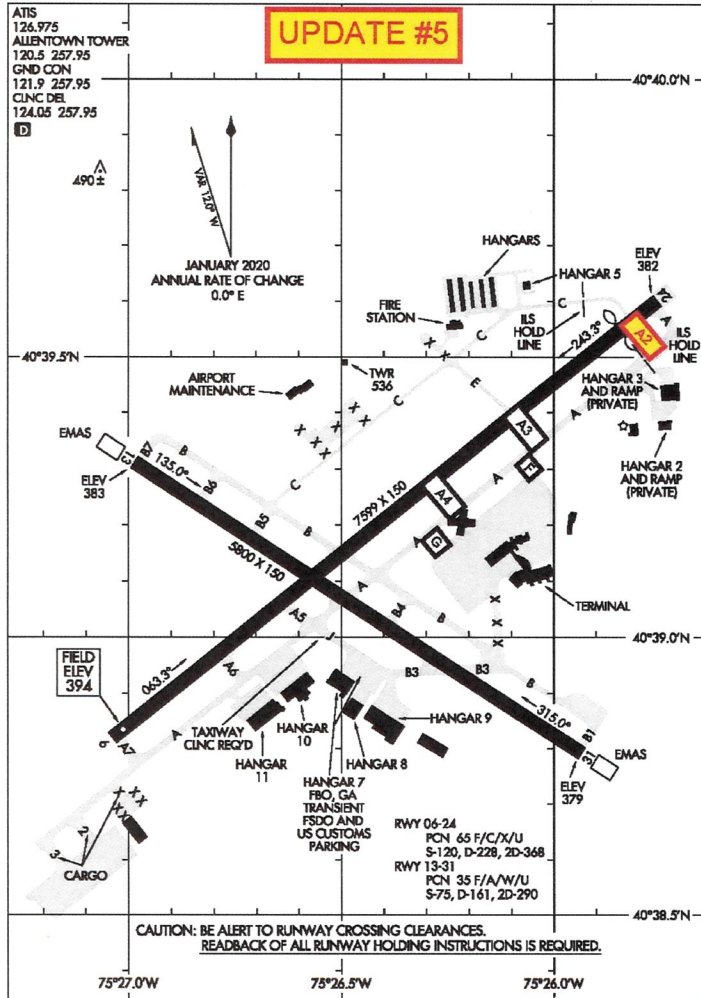
23054

ALLENTOWN, PENNSYLVANIA
LEHIGH VALLEY INTL (ABE)

23054

AIRPORT DIAGRAM

AL-15 (FAA)

LEHIGH VALLEY INTL (A.B.E)
ALLENTOWN, PENNSYLVANIA

NE-4, 15 JUN 2023 to 13 JUL 2023

NE-4, 15 JUN 2023 to 13 JUL 2023

AIRPORT DIAGRAM

23054

ALLENTOWN, PENNSYLVANIA
LEHIGH VALLEY INTL (A.B.E)

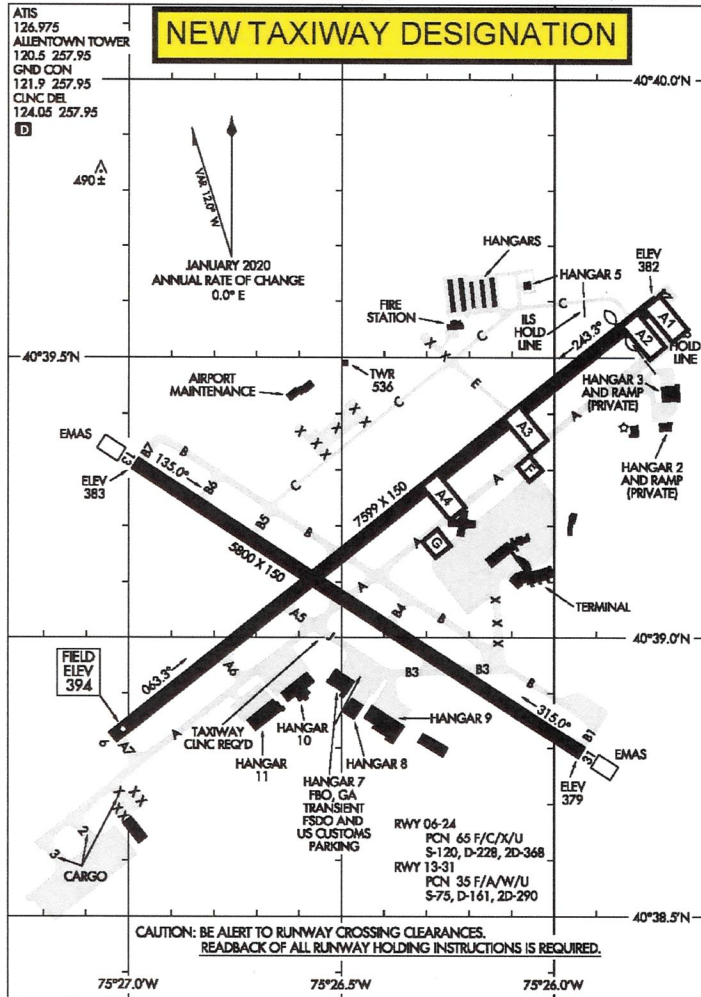
ALLENTOWN, PENNSYLVANIA
LEHIGH VALLEY INTL (ABE)

NE-4, 15 JUN 2023 to 13 JUL 2023

23054

AIRPORT DIAGRAM

AL-15 (FAA)

LEHIGH VALLEY INTL (ABE)
ALLENTOWN, PENNSYLVANIA

AIRPORT DIAGRAM

23054

ALLENTOWN, PENNSYLVANIA
LEHIGH VALLEY INTL (ABE)