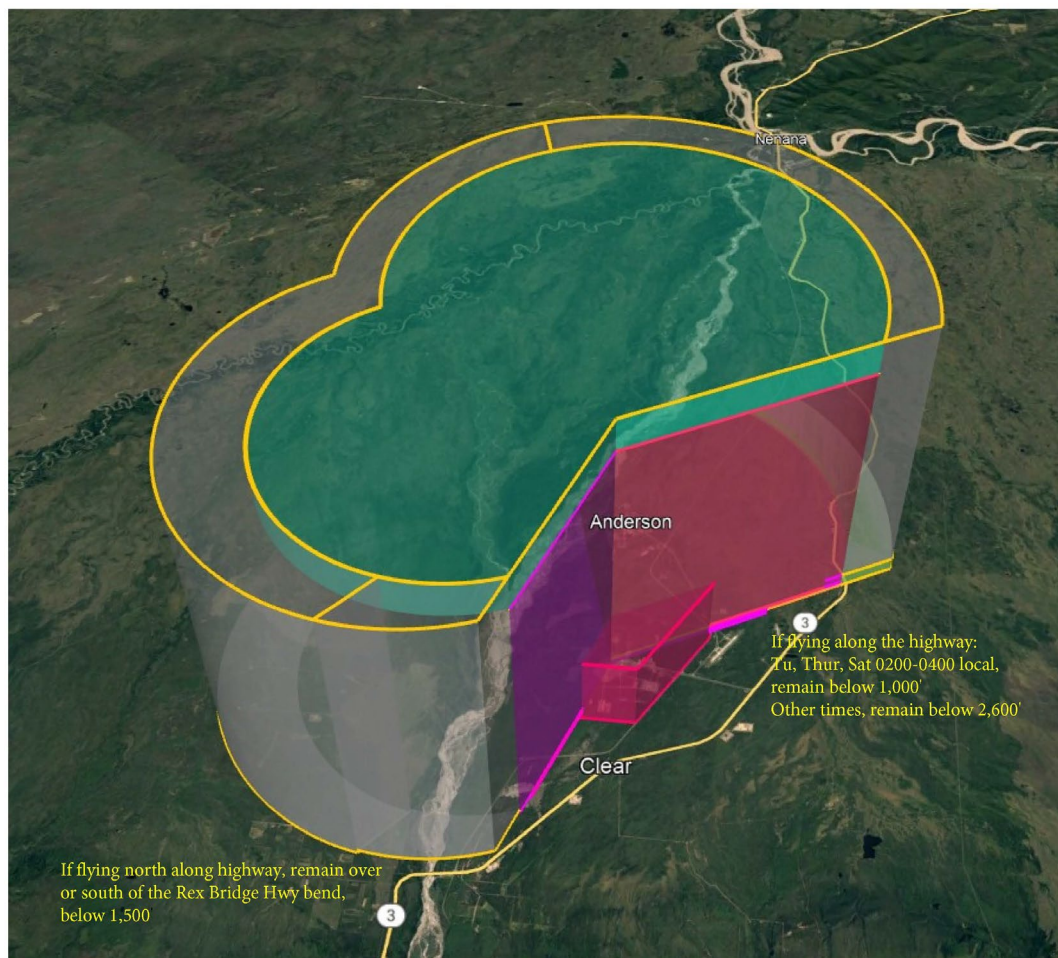


R2206 Letter to Airmen effective February 15, 2023 until further notice.

Recently, R2206 Restricted area was expanded and became effective Dec 29, 2022. It was later discovered a slightly larger area would be needed to protect aircraft and personnel from encountering excessive interference from LRDR transmissions. MDA, in cooperation with the Federal Aviation Administration (FAA) and Department of Defense (DoD), has issued a temporary flight restrictions (TFR) to encompass the additional area needed for protection to aircraft and personnel. (See Figure 1 below).

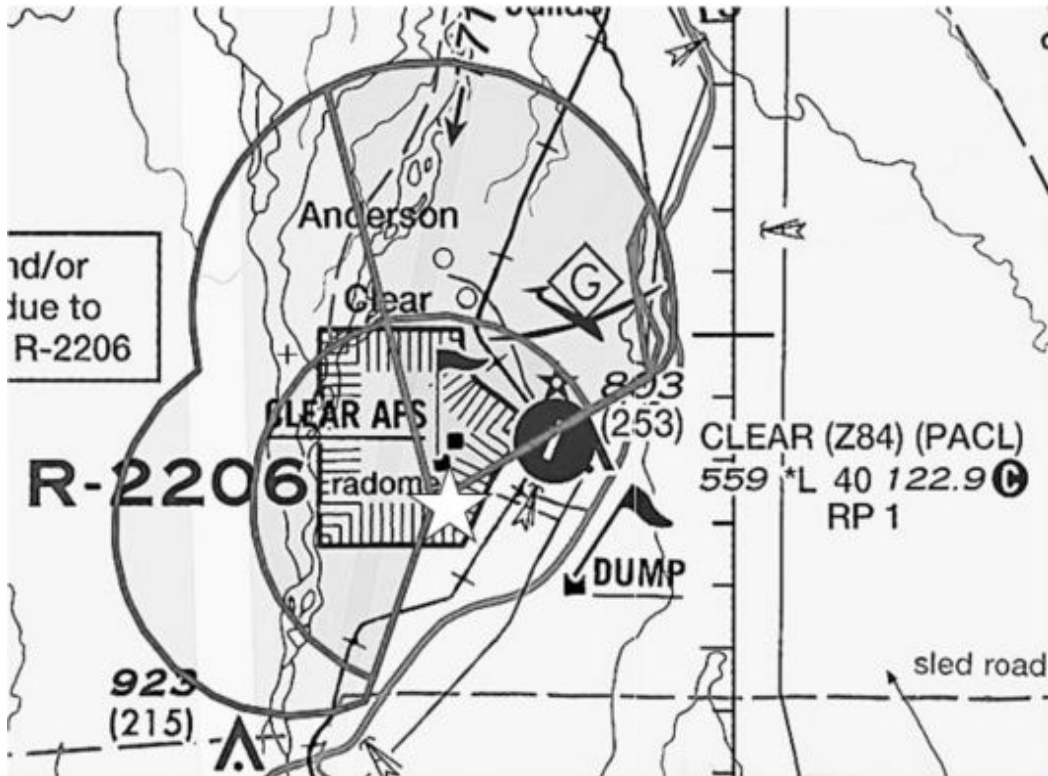
Figure 1. Gray area represents the temporary flight restrictions. Where depicted, the expansion is approximately 1 NM wide from the current boundary of R-2206. The altitude has been increased to Flight Level 360.



Whenever R-2206 and the associated TFRs are activated during an unscheduled time, the Transition Warning System (TWS) will be activated. The TWS will provide visual (flashing white during daytime, flashing white/red alternating at night) warnings when the AOZ airspace is unsafe for aircraft operations. The beacon is located 2.45 NM southwest of Clear airport ($64^{\circ} 17' 13''\text{N}/149^{\circ} 11' 16''\text{W}$), mounted on a building rooftop (location depicted below). The light beacon is baffled and only visible on radials 345CW200 from its location, or is visible, day and

night, while flying southbound from PANN airport between 1,000 feet and 2,600 feet AGL and along the Parks Highway. The light beacon is not visible from Clear Airport ramps or other surfaces; monitor frequency 133.25 MHz for current status. Severe weather will affect the visibility of the beacon; use extreme caution during periods of low visibility. (See Figure 2 below)

Figure 2.



Beacon Location

R-2206 Restrict Area is composed of seven (7) segments. Four (4) segments are permanently active, while three (3) are dynamic and may be enabled or disabled in accordance with LRDR defensive posture (related to threat condition).

In addition, four (4) TFR segments are in effect that expand R-2206 Restricted Area. The TFR segments are active continuously (24 hours per day). (See figure 3 below for the TFR NOTAMs).

NOTE: Activation of all segments may occur without notice for a real-world threat.

Whenever all TFR and R-2206 segments are activated, the TWS warning light will be activated and the audio message on frequency 133.25 will be updated to inform pilots.

Figure 3. TFR NOTAMs. (Example)

!FDC Y/NNNN ZAN AK..AIRSPACE CLEAR, AK..TEMPORARY FLIGHT RESTRICTIONS. FEBRUARY 2-MARCH 11, 2023 LOCAL. PURSUANT TO 49 USC 40103(B)(3), THE FEDERAL AVIATION ADMINISTRATION (FAA) CLASSIFIES THE AIRSPACE DEFINED IN THIS NOTAM AS 'NTL DEFENSE AIRSPACE'. PILOTS WHO DO NOT ADHERE TO THE FOLLOWING PROC MAY BE INTERCEPTED, DETAINED AND INTERVIEWED BY LAW ENFORCEMENT/SECURITY PERSONNEL. ANY OF THE FOLLOWING ADDITIONAL ACTIONS MAY ALSO BE TAKEN AGAINST A PILOT WHO DOES NOT COMPLY WITH THE RQMNTS OR ANY SPECIAL INSTRUCTIONS OR PROC ANNOUNCED IN THIS NOTAM:

A) THE FAA MAY TAKE ADMINISTRATIVE ACTION, INCLUDING IMPOSING CIVIL PENALTIES AND THE SUSPENSION OR REVOCATION OF AIRMEN CERTIFICATES; OR

B) THE UNITED STATES GOVERNMENT MAY PURSUE CRIMINAL CHARGES, INCLUDING CHARGES UNDER 49 USC SECTION 46307; OR

C) THE UNITED STATES GOVERNMENT MAY USE DEADLY FORCE AGAINST THE AIRBORNE ACFT, IF IT IS DETERMINED THAT THE ACFT POSES AN IMMEDIATE SECURITY THREAT.

PURSUANT TO 14 CFR 99.7, SPECIAL SECURITY INSTRUCTIONS, ALL ACFT FLT OPS ARE PROHIBITED: WI AN AREA DEFINED AS 641410N1491401W (ENN170021.7) TO 641323N1491441W (ENN171022.5) THEN CLOCKWISE ON A 3.8 NM ARC CENTERED ON 641653N1491756W (ENN177019.5) TO 641309N1491930W (ENN176023.3) TO 641359N1491755W (ENN174022.3) THEN COUNTERCLOCKWISE ON A 3 NM ARC CENTERED ON 641655N1491641W (ENN175019.3) TO THE POINT OF ORIGIN 1500FT AGL-FL360 EFFECTIVE 2302030200 UTC (1700 LOCAL 02/02/23) UNTIL 2303120200 UTC (1700 LOCAL 03/11/23).

WI AN AREA DEFINED AS 641309N1491930W (ENN176023.3) THEN CLOCKWISE ON A 3.8 NM ARC CENTERED ON 641653N1491756W (ENN177019.5) TO 642008N1492230W (ENN186017.2) THEN CLOCKWISE ON A 4.8 NM ARC CENTERED ON 642026N1491125W (ENN171015.3) TO 642448N1491602W (ENN184011.8) TO 642356N1491530W (ENN182012.5) THEN COUNTERCLOCKWISE ON A 4 NM ARC CENTERED ON 642022N1491125W (ENN170015.4) TO 641927N1492022W (ENN183017.4) THEN COUNTERCLOCKWISE ON A 3 NM ARC CENTERED ON 641655N1491641W (ENN175019.3) TO 641359N1491755W (ENN174022.3) TO THE POINT OF ORIGIN 1000FT AGL-FL360 EFFECTIVE 2302030200 UTC (1700 LOCAL 02/02/23) UNTIL 2303120200 UTC (1700 LOCAL 03/11/23).

WI AN AREA DEFINED AS 642448N1491602W (ENN184011.8) THEN CLOCKWISE ON A 4.8 NM ARC CENTERED ON 642026N1491125W (ENN171015.3) TO 641958N1490024W (ENN153015.6) TO 641929N1490227W (ENN156016) THEN COUNTERCLOCKWISE ON A 4 NM ARC CENTERED ON 642022N1491125W

(ENN170015.4) TO 642356N1491530W (ENN182012.5) TO THE POINT OF ORIGIN 2600FT AGL-FL360 EFFECTIVE 2302030200 UTC (1700 LOCAL 02/02/23) UNTIL 2303120200 UTC (1700 LOCAL 03/11/23).

WI AN AREA DEFINED AS 641725N1491125W (ENN169018.3) TO 641410N1491401W (ENN170021.7) THEN CLOCKWISE ON A 3 NM ARC CENTERED ON 641655N1491641W (ENN175019.3) TO 641927N1492022W (ENN183017.4) THEN CLOCKWISE ON A 4 NM ARC CENTERED ON 642022N1491125W (ENN170015.4) TO 641929N1490227W (ENN156016) TO THE POINT OF ORIGIN FL320-FL360 EFFECTIVE 2302030200 UTC (1700 LOCAL 02/02/23) UNTIL 2303120200 UTC (1700 LOCAL 03/11/23).

EXCEPT AS SPECIFIED BELOW AND/OR UNLESS AUTHORIZED BY ATC:

1. THESE RESTRICTIONS EXCLUDE THAT PORTION OF AIRSPACE WHOLLY CONTAINED IN R-2206A THRU R-2206G WHEN ACTIVE.
2. ALL AIRCRAFT ENTERING OR EXITING THE TFR MUST BE ON A DISCRETE CODE ASSIGNED BY AN AIR TRAFFIC CONTROL (ATC) FACILITY.
3. AIRCRAFT MUST BE SQUAWKING THE DISCRETE CODE AT ALL TIMES WHILE IN THE TFR.
4. ALL AIRCRAFT ENTERING OR EXITING THE TFR MUST REMAIN IN TWO-WAY RADIO COMMUNICATIONS WITH ATC.
5. ANCHORAGE /ZAN/ TEL 907-269-1103, IS THE FAA COORDINATION FACILITY.

If you have any questions, please call: (907) 269-1210 or email AJE-EW-ZAN-Airspace-Staff@faa.gov.