



FEDERAL AVIATION ADMINISTRATION



**FLIGHT ADVISORY
GPS INTERFERENCE TESTING**

PATUXENT RIVER (PAXRVR) 22-02 REVISION 1

**08 August – 02 September
Patuxent River, MD**

GPS testing is scheduled as follows and may result in unreliable or unavailable GPS signal.

A. Location: Centered at 381753N0762229W or the RIC VOR 052 degree radial at 65 NM.

B. Dates and times (**Dates and times are based on GMT (Z):**):

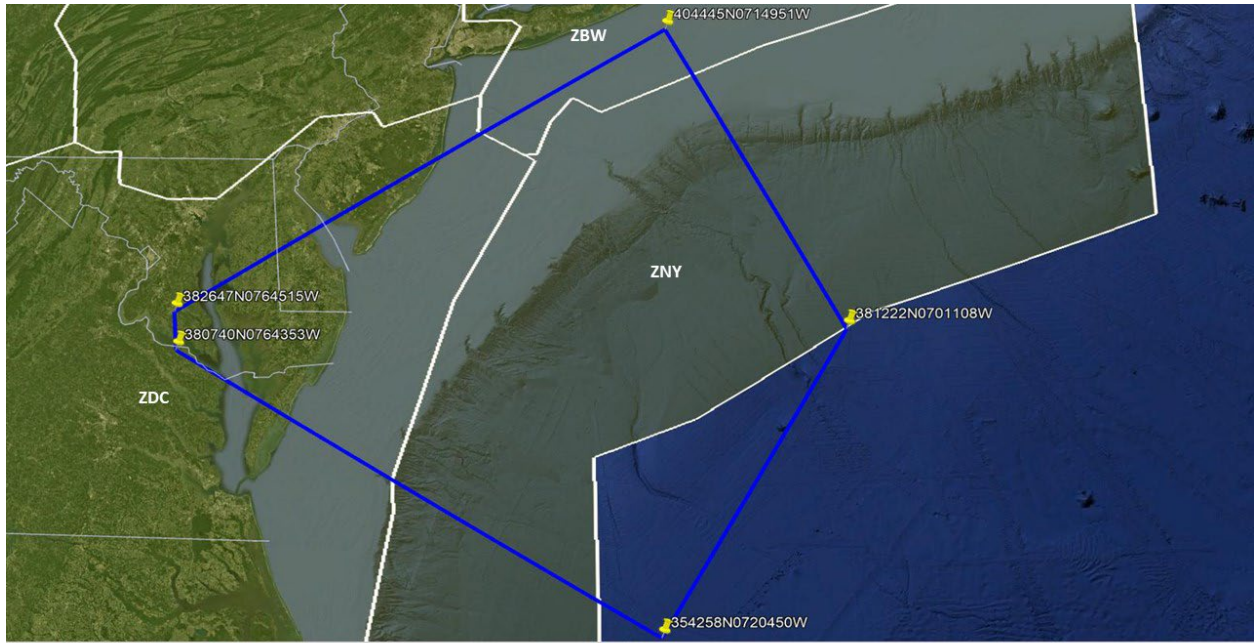
08 AUG 22		0400Z – 1000Z	1400Z – 1600Z	2100Z – 2300Z
10 AUG 22		0400Z – 1000Z	1400Z – 1600Z	2100Z – 2300Z
12 AUG 22		0400Z – 1000Z	1400Z – 1600Z	2100Z – 2300Z
15 – 19 AUG 22	DLY	0400Z – 1000Z	1400Z – 1600Z	2100Z – 2300Z
22 AUG 22		0400Z – 1000Z	1400Z – 1600Z	2100Z – 2300Z

C. Duration: Each event may last the entire requested period.

D. NOTAM INFO: NAV GPS (PAXRVR GPS 22-02) (INCLUDING WAAS, GBAS, AND ADS-B) MAY NOT BE AVBL WI AN AREA DEFINED AS 404445N0714951W TO 382647N0764515W TO 380740N0764353W TO 354258N0720450W TO 381222N0701108W TO 404445N0714951W, SFC-UNL.

E. Pilots are encouraged to report anomalies in accordance with the Aeronautical Information Manual (AIM) paragraphs 1-1-13 and 5-3-3.

The NOTAMs discussed in this advisory may change with little or no notice. Pilots are advised to check NOTAMs frequently for possible changes prior to operations in the area. NOTAMs will be published at least 24 hours in advance of any GPS tests.



PAXRVR GPS 22-02 Revision 1
GPS INTERFERENCE TESTING

PAXRVR GPS 22-02 REVISION 1 GPS INTERFERENCE TESTING