



LEGEND:

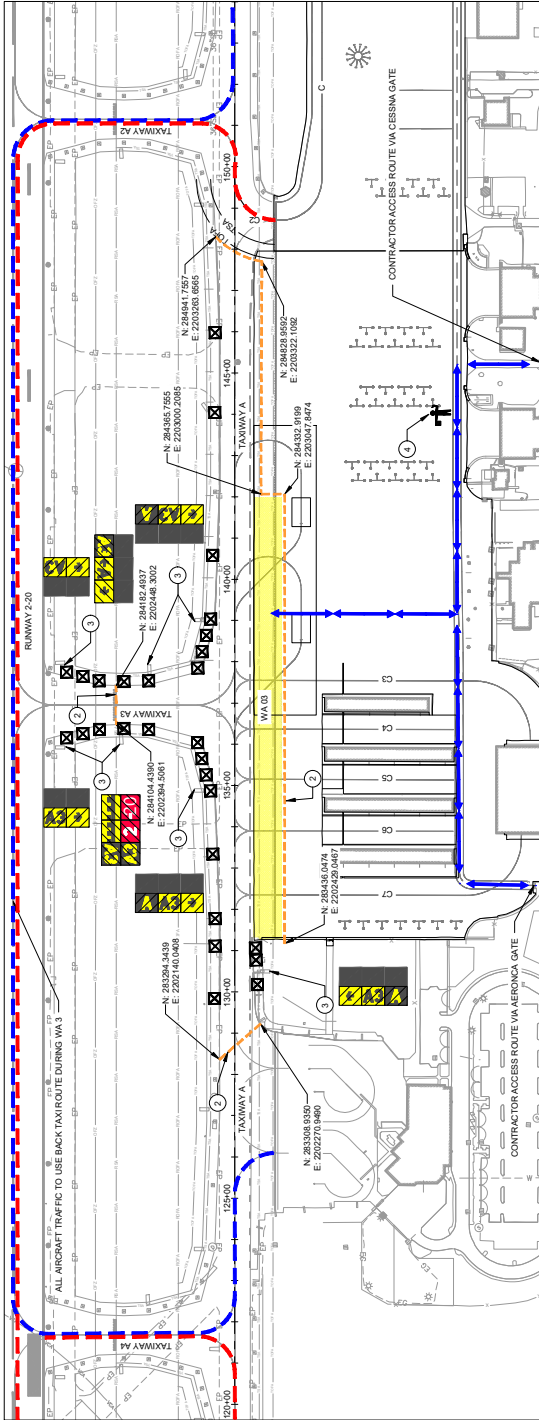
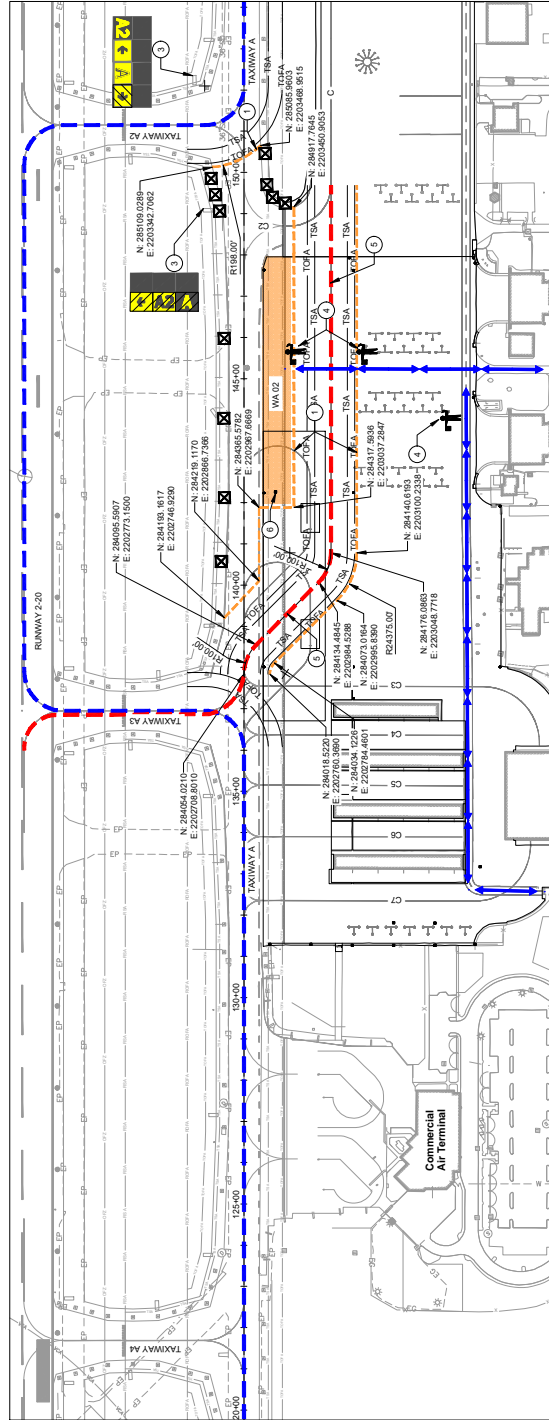
	CONTRACTOR ACCESS ROUTE
	A00-3 AIRCRAFT ACCESS ROUTE
	ADD 1 & 2 AIRCRAFT ACCESS ROUTE
	TSA
	LOW PROFILE BARRICADES
	TOPA
	TAXIWAY OBJECT FREE AREA
	FLAGGER CONTROLLED CROSSING
	COVER UP LIGHT
	COVER AIRFIELD GUIDANCE SIGN PANEL

- KEYNOTES:**
- 1) WA 2 LIGHTED LOW PROFILE BARRICADES
 - 2) WA 2 AIRFIELD GUIDANCE SIGN, SEE GENERAL NOTES
 - 3) FLAGGER CONTROLLED CROSSING, SEE GENERAL NOTES
 - 4) TAXIWAY CENTERLINE MARKING
 - 5) REMOVE AND REPLACE (E) CATCH BASIN

WORK AREA 2

- GENERAL NOTES:**
1. TEMPORARY TAXIWAY CENTERLINE SHALL BE A SINGLE COAT SHALL BE ORBITERATED AT THE CONCLUSION OF WA 2.
 2. CESSNA GATE SHALL BE ACCESSED BY BAGGED ESCORTS OR WHEN A GATE GUARD IS STATIONED THERE, WHEN NOT IN METHOD FOR COVERING TAXIWAY EDGE LIGHTS AND AIRFIELD GUIDANCE SIGNS SHALL BE APPROVED BY THE RPR.
 3. CONTRACTOR TO PROVIDE FLAGGER WITH RADIO AND VACUUM SWEEPER WHEN UTILIZING THE TEMPORARY TAXIWAY A AND VEHICLE SERVICE ROAD CROSSINGS.

WORK AREA 3



WORK AREAS

MAJOR WORK TO BE COMPLETED

- WORK AREA 2**
- INSTALL TEMPORARY AIRFIELD TRAFFIC CONTROL
 - INSTALL TEMPORARY EROSION CONTROL
 - RUBBLIZE EXISTING PCC PAVEMENT
 - INSTALL PAVEMENT UNDERDRAINS
 - INSTALL INITIAL COAT OF AIRFIELD PAVEMENT MARKINGS
- WORK AREA 3**
- INSTALL TEMPORARY AIRFIELD TRAFFIC CONTROL
 - INSTALL TEMPORARY EROSION CONTROL
 - RUBBLIZE EXISTING PCC PAVEMENT
 - INSTALL PAVEMENT UNDERDRAINS
 - INSTALL INITIAL COAT OF AIRFIELD PAVEMENT MARKINGS

IMPACT ON AIRPORT OPERATIONS

- WORK AREA 2**
- TAXIWAY A BETWEEN TAXIWAY A2 AND AS CLOSED TO ALL AIRCRAFT TO BACK TAXI ON RUNWAY 220 AROUND CLOSED TAXIWAY A.
 - TAXIWAY A2 AND TAXIWAY A BETWEEN TAXIWAY A1 AND TAXIWAY A3 AND TAXIWAY A1 BETWEEN TAXIWAY 220 AROUND CLOSED TAXIWAY A.
- WORK AREA 3**
- TAXIWAY A BETWEEN TAXIWAY A2 AND AS CLOSED TO ALL AIRCRAFT TO BACK TAXI ON RUNWAY 220 AROUND CLOSED TAXIWAY A.
 - TAXIWAY A2 AND TAXIWAY A BETWEEN TAXIWAY A1 AND TAXIWAY A3 AND TAXIWAY A1 BETWEEN TAXIWAY 220 AROUND CLOSED TAXIWAY A.

