

PILOTS: KVCV IS RIGHTSIZING

VICTORVILLE AIRPORT HAS DECREASED RW 17/35 BY 1,999' AND TAXIWAYS HAVE CHANGED. PILOTS PLEASE TAKE NOTE OF THE FOLLOWING TAXIWAY CHANGES.

High Desert Power

AIRPORT DIAGRAM

AL-794 (FAA)

SOUTHERN CALIFORNIA LOGISTICS (VVCV)
VICTORVILLE, CALIFORNIA

ATIS*

135.475

VICTORVILLE TOWER*

118.35 282.225

GND CON

124.45

D

CAUTION: BE ALERT TO RUNWAY CROSSING CLEARANCES.

READBACK OF ALL RUNWAY HOLDING INSTRUCTIONS IS REQUIRED.

Portion of RWY 17/35 "rightsized" by shortening the runway 1,999 feet. New RWY 17/35 length is 13,051 feet. Old TWY E1 and a portion of TWY E are also permanently closed. The old E2 and E3 TWY's were renamed E1 and E2 respectively.

L1

ELEV
2818

0.5% UP

167.7°

E1

RWY 03-21

PCN 76 F/B/X/T

RWY 17-35

PCN 68 F/A/W/T

E2

34°37'N

VAR 11.8° E

JANUARY 2020
ANNUAL RATE OF CHANGE
0.1° W

SW-3, 15 J

AUG 2021

KVCV is Rightsizing!

A portion of RWY 17/35 "rightsized" by shortening the runway 1,999 feet. The new RWY 17/35 length is 13,051 feet.

While we are making improvements, present airport diagrams may not reflect these changes to RW 17/35. These are the changes you need to watch out for!

Old TWY E1 and a portion of TWY E are also
permanently closed.

The old E2 and E3 TWY's were renamed E1 and E2
respectively.

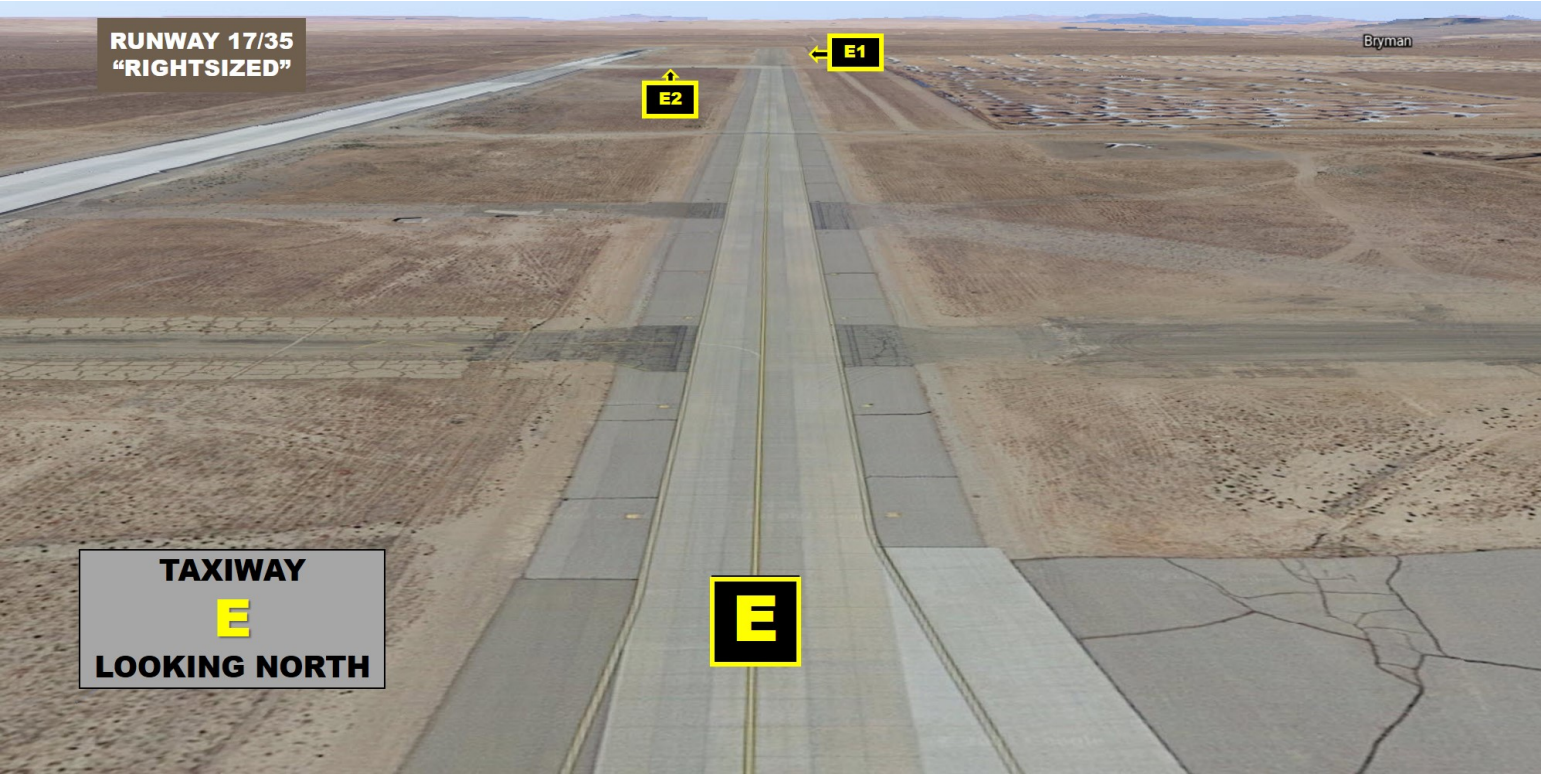
THIS IS WHERE
THE NEW
TAXIWAY E 1 & E
2 ARE LOCATED:



PILOTS: TAKE A
CLOSER LOOK
TOWARDS THE
NORTH END OF
RW35



THIS IS LOOKING
NORTH FROM
TAXIWAY E
TOWARDS E1 &
E2



RUNWAY 17/35
"RIGHTSIZED"

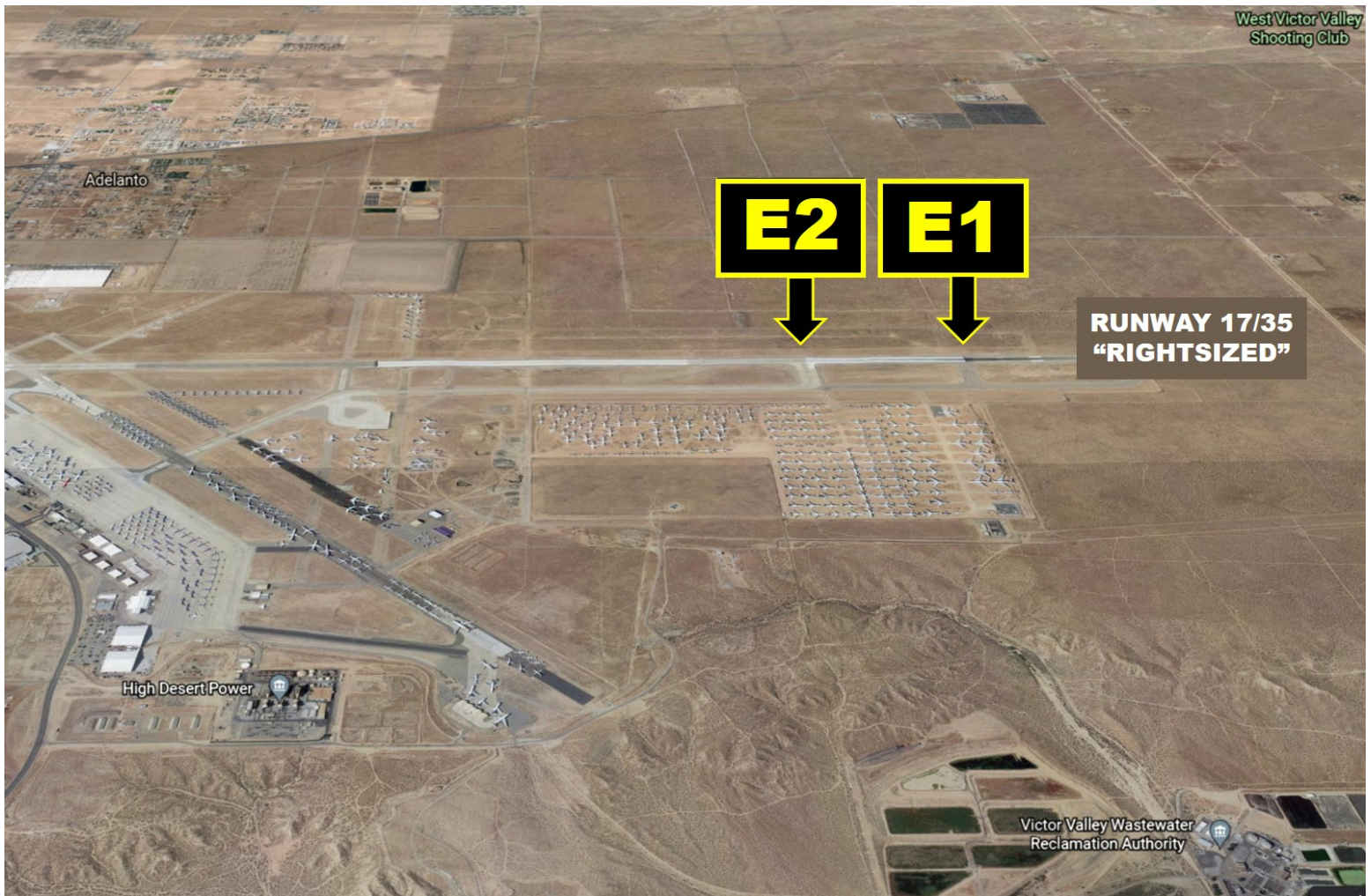
Bryman

E2

E1

TAXIWAY
E
LOOKING NORTH

E



Pilots, please rely on the taxiway signs. Our taxiway signs are correct and show the taxiway changes made. The updated published chart changes won't be out until October 7. In the meantime, pilots need to NOT follow the published (not updated) diagrams. Pilots, please prioritize use of the taxiway signs and access one of the "unofficial" updated diagrams that we pushed

out there i.e. Letter to Airmen with
attachment, copies at FBO.



E2

E1

RUNWAY 17/35
"RIGHTSIZED"