

VFR Helicopter Beacon Code Test Outreach

August 2014



Federal Aviation
Administration



VFR Helicopter Beacon Codes

What changed?

- JO 7110.66D CHG 2: Effective March 31, 2014
- Additional beacon codes for VFR helicopters to utilize while not in contact with ATC in a defined area surrounding Los Angeles
- **NOTE:** LA Special Flight Rules Corridor will remain on a 1201 code and all prearranged codes will still be utilized (i.e. law enforcement/firefighting/medical)

1205	Reserved for use by VFR Helicopters within the Los Angeles region not in contact with ATC.
1206	Reserved for use by VFR Law enforcement/First Responder Helicopters within the Los Angeles region not in contact with ATC.



VFR Helicopter Beacon Codes

Why?

- Increased awareness for air traffic control
- Allows air traffic to know operating characteristics of 1200 codes (i.e. a helicopter can stop and hover opposed to a fixed-wing aircraft)

When?

- Test period will be conducted September 1, 2014 through February 27, 2015

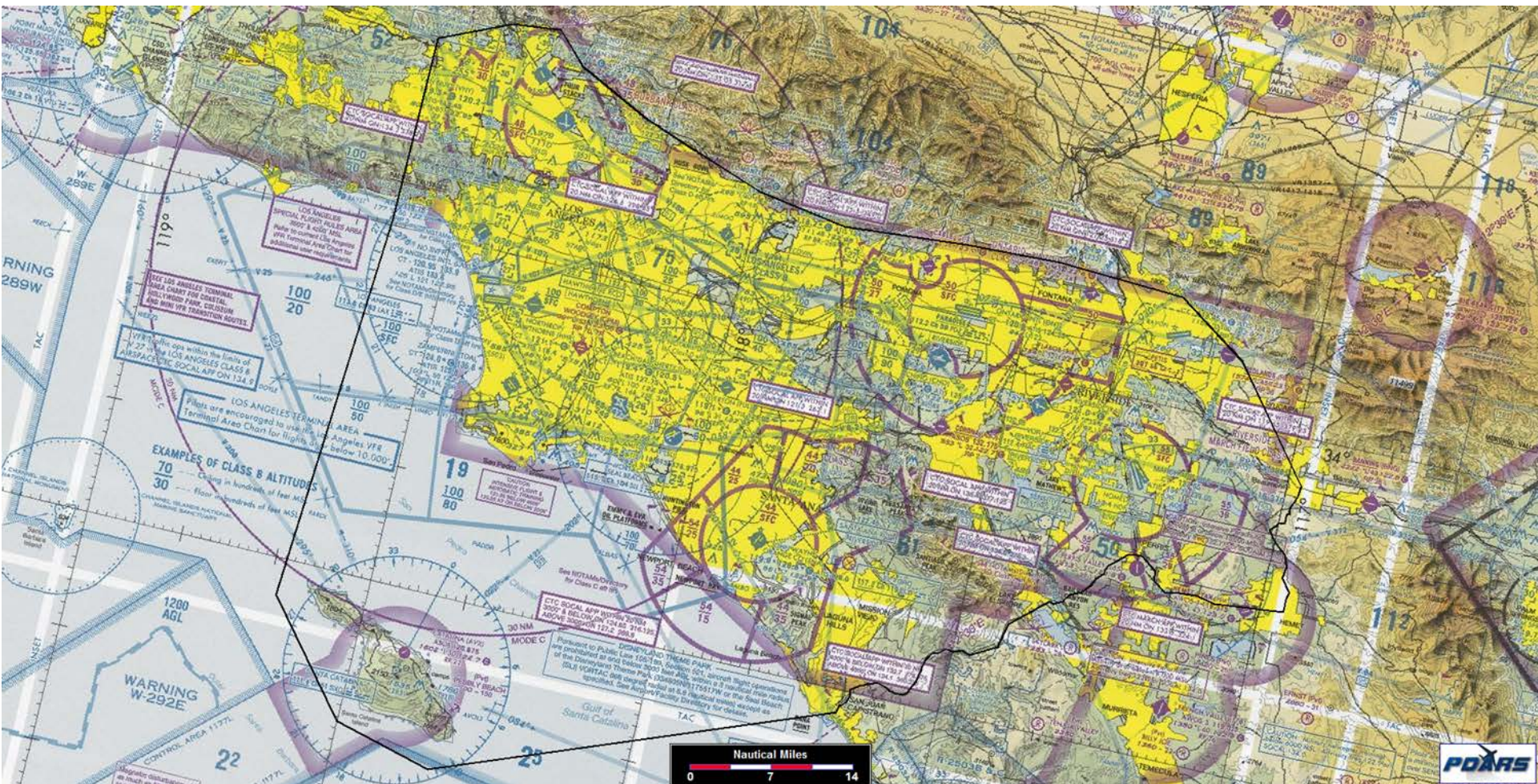


Defined Area

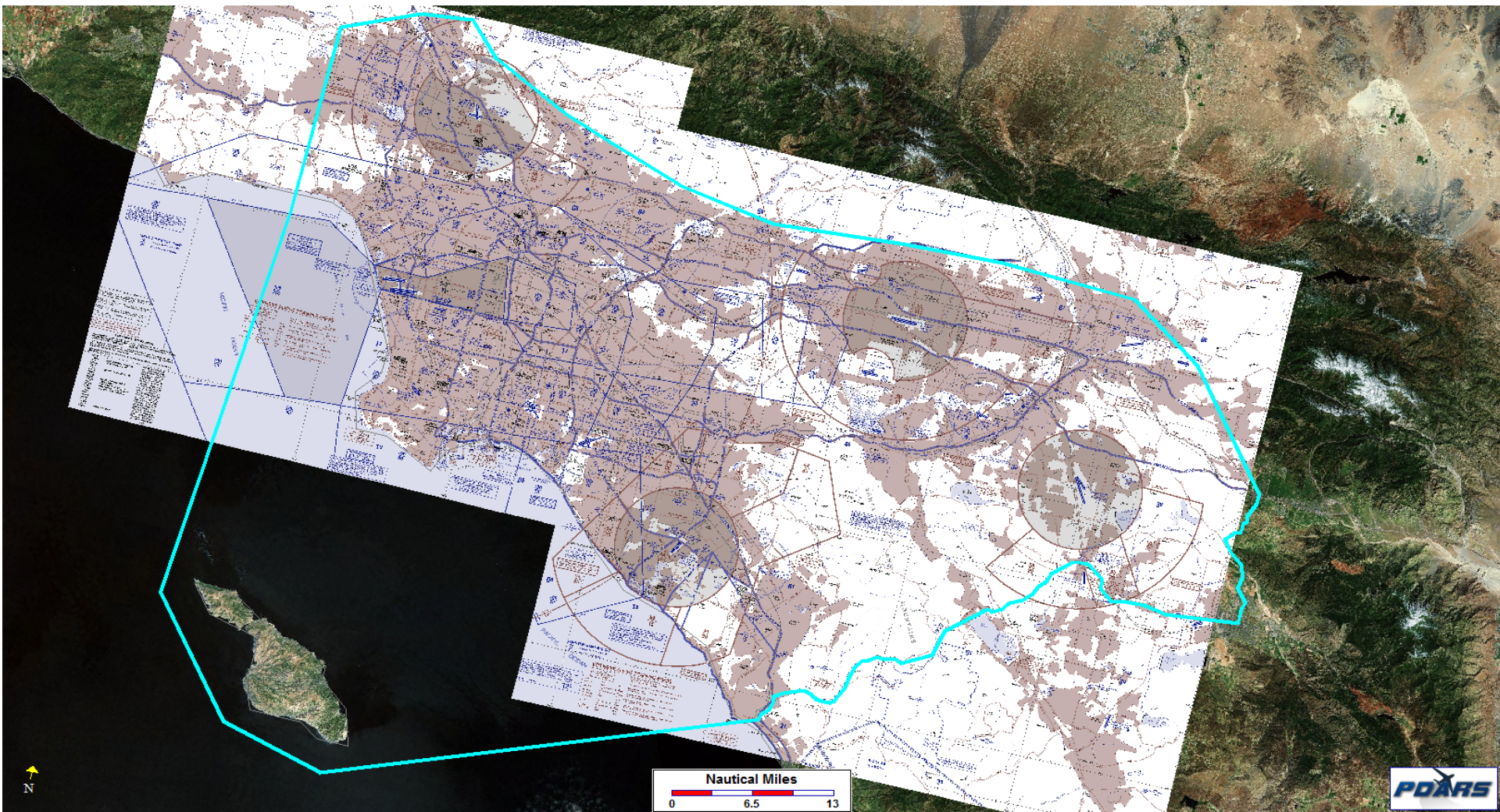
- Approximately the area starting at the Northwestern tip of Santa Catalina Island, on a line to California Route 27, following California Route 27 to California Route 118 to US Route I-210 to California Route 210 to US Route I-10 to California Route 79 to California Route 74 to US Route I-5 to California Route 1 to San Juan Creek then to the Southeastern point of Santa Catalina Island, along all Western coast of Santa Catalina Island to the Northwestern tip of Santa Catalina Island
- Operating at and below 6000 feet MSL
- Graphical Depiction on next slide



Visual Representation of Area



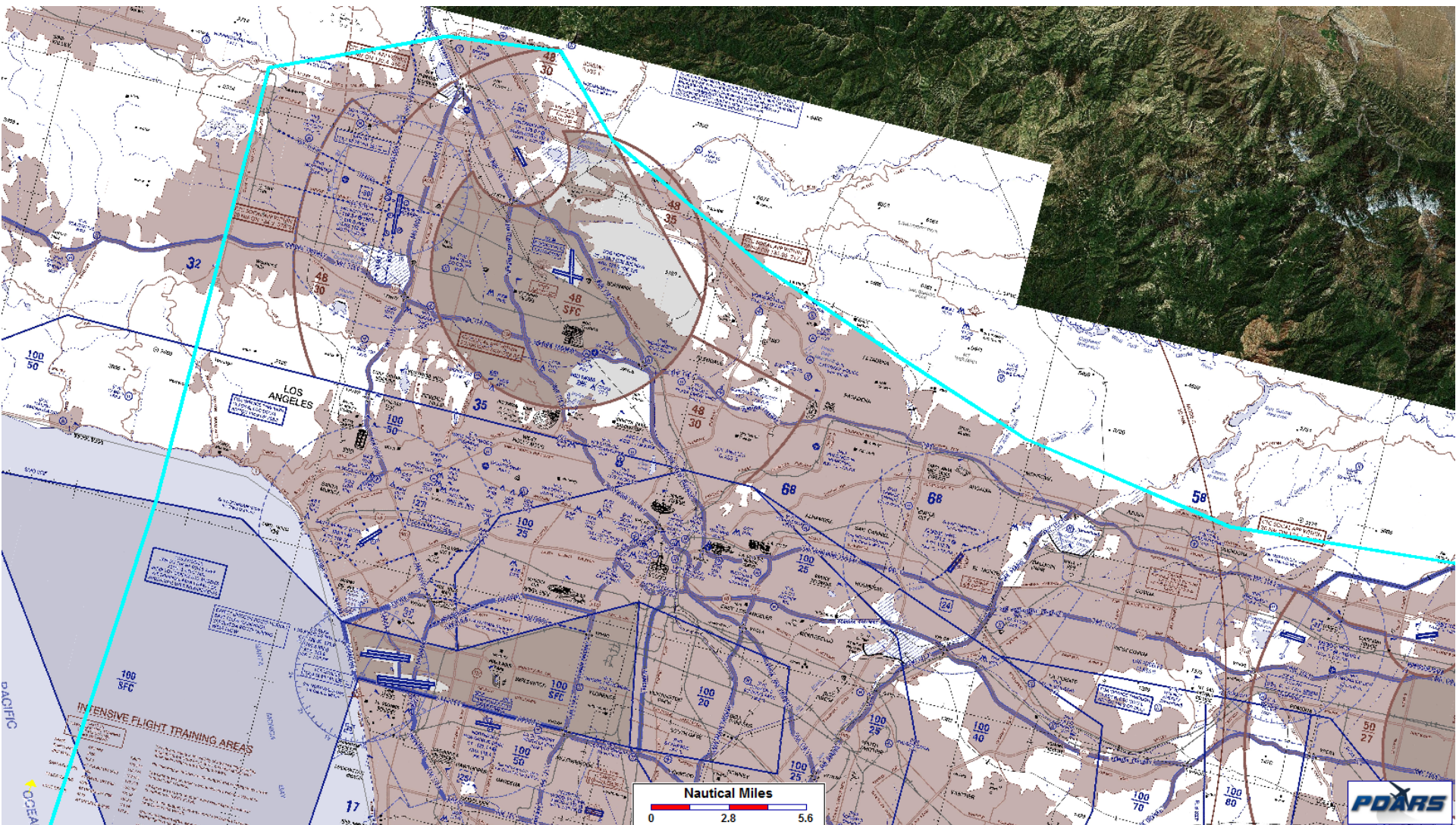
Visual Representation of Area



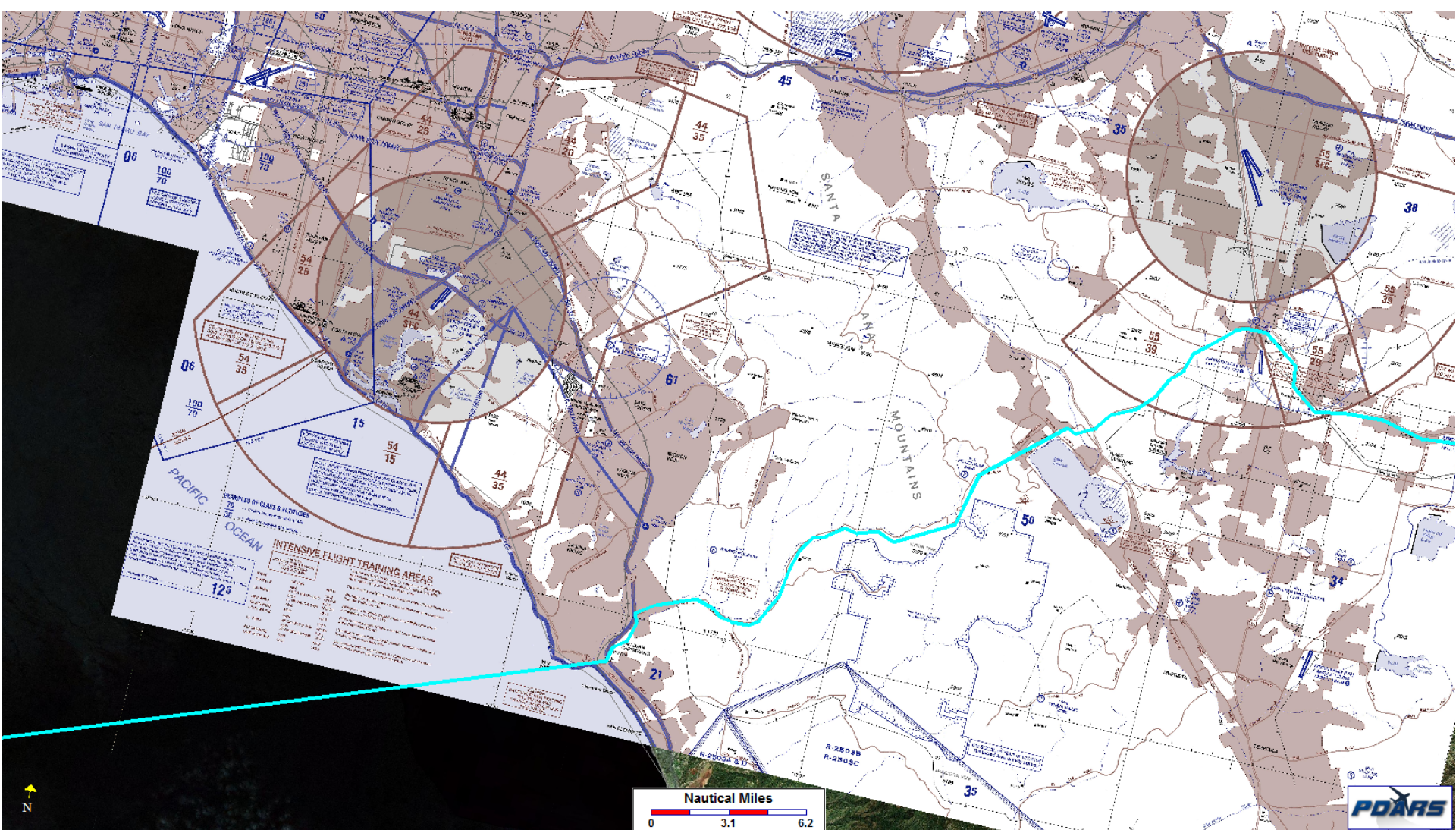
Federal Aviation
Administration



Visual Representation of Area

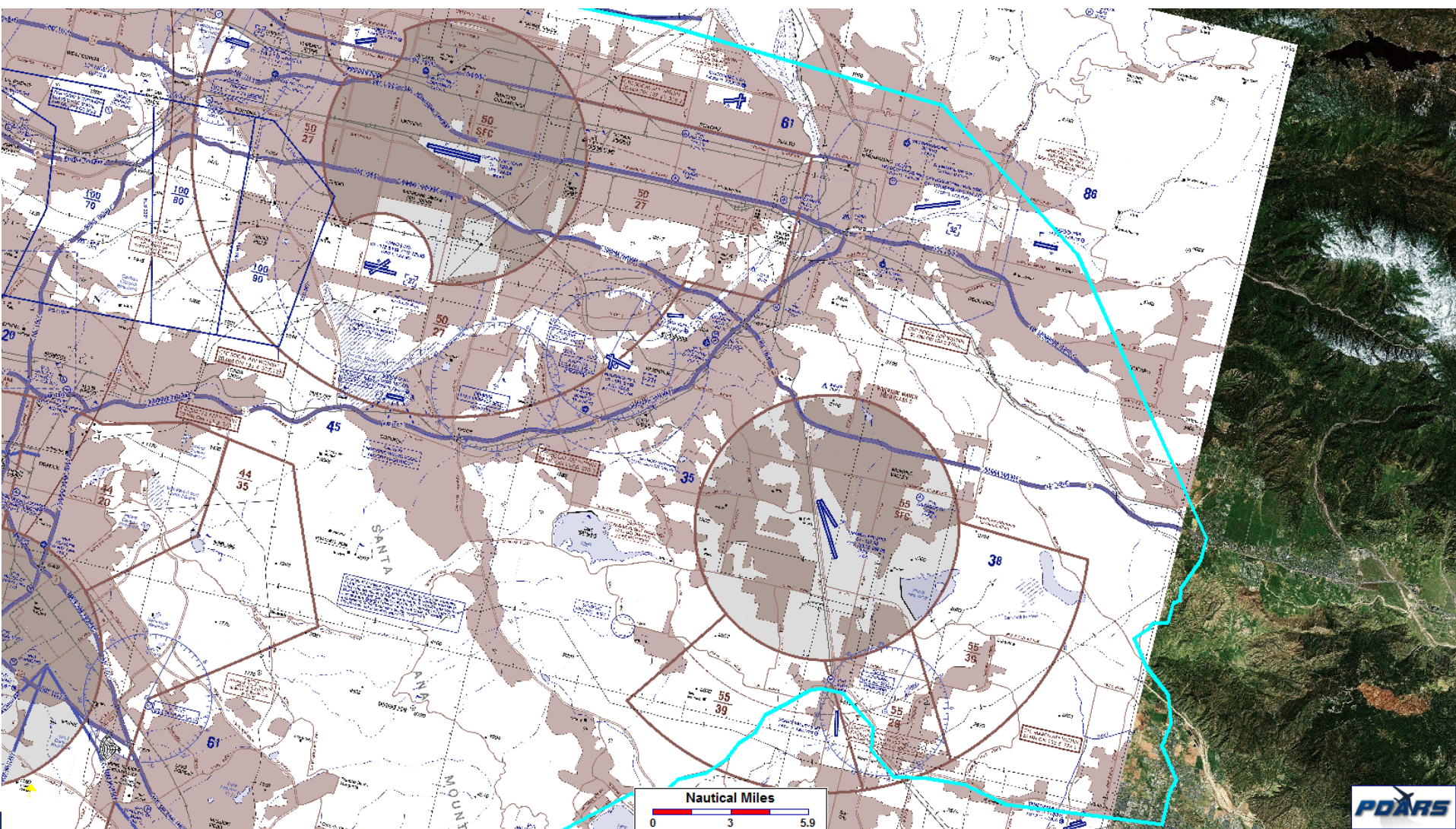


Visual Representation of Area



Federal Aviation
Administration

Visual Representation of Area



Federal Aviation
Administration



Questions?

- **Contact:** Mindy Wright (425) 203-4530 or Victoria Roach (425) 203-4567

