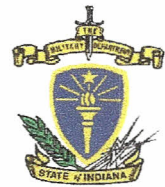


INSTALLATION SUPPORT UNIT
CAMP ATTERBURY
JOINT MANEUVER TRAINING CENTER
PO BOX 5000
Edinburgh, Indiana 46124-5000



CAJMTC-DPTMS-AV

01 July 2012

MEMORANDUM FOR RECORD

SUBJECT: Program of Instruction – Warbirds Salute to Soldiers Fly-in 2012 (11 August 2012)

1. GENERAL. Camp Atterbury welcomes the aviation community to participate in the 1st Warbirds Salute to Soldiers Fly-in. This is a military outreach endeavor to the local civilian aviation community.

2. PURPOSE. Information in this memorandum serves as a Camp Atterbury planning and procedures guide for the fly-in. Safety is the highest priority and will require attentiveness and accountability from all to achieve.

3. DUTIES.

a. Camp Atterbury DPTM-Airfield Staff & Civil Air Patrol (Bloomington 002, Greenwood 069 & Lutheran HS 801) will coordinate ground movement and aircraft parking plan.

b. Himsel Tower – execute standard air plan and be prepared to receive non participating air traffic.

c. Camp Atterbury ISU provides iced water buffalo and port-a-john support.

d. Family Readiness Groups (FRG) invited to sell water, snacks, etc. for fund raiser for FRG.

4. PROCEDURES.

a. All civilian aircraft must have Civil Aircraft Landing Permit (CALP) on file before requesting prior permission request (PPR) number for landing at Himsel AAF.

b. PPR must be requested from Himsel AAF aviation operations at (812) 526-1355.

c. CALP for Warbird Fly-in will be valid for the entire month of August 2012.

However, PPR must be received prior to any landing.

d. All aircraft must contact Himsel tower (126.2 MHz) and receive specific clearance to enter restricted area R3401 before entry.

e. All aircraft entries will be from the north (vicinity HWY 252.)

f. Contact Himsel tower 5-10 miles out for sequencing.

g. Use extreme caution in the vicinity of Franklin Flying Field (3FK). Frequent parachute operations.

h. Traffic pattern altitude is 1500 feet.

i. Pilots must avoid hazard areas (Live fire weapons ranges and ammunition supply area.)

CAJMTC-DPTMS-AV

SUBJECT: POI – Warbirds Salute to Soldiers Fly-in 2012 (11 August 2012)

j. Precision approach radar (PAR) approaches may be available from 'Himsel GCA', when operational. Contact Himsel tower for operational status. (Intermediate altitude 2000feet, DA 900feet) **NOTE:** PARs are available year-round. Contact Himsel operations for monthly availability schedule.

k. On 11 August 2012, No arrivals will be approved before 10:30 am.

l. Warbirds will be given first opportunities to land (approximately 10:30 – 10-45 am. Please plan accordingly.

m. Fly-in official hours (10:30 am till 4:00 pm). However, PPR'd aircraft may come and go, as desired.

n. Please bring chocks, if able.

5. COORDINATING INSTRUCTIONS.

a. Reminder: aircrews with CALP on file may request PPR any time during month of August 2012. Hopefully this will get aircrews familiar with the military reservation and its procedures.

b. Aircrews are reminded to be prepared for photo requests of their aircraft. Access to aircraft will be at the discretion of individual aircrew PICs.

c. Direct any questions to Himsel AAF operations staff at (812) 526-1355.

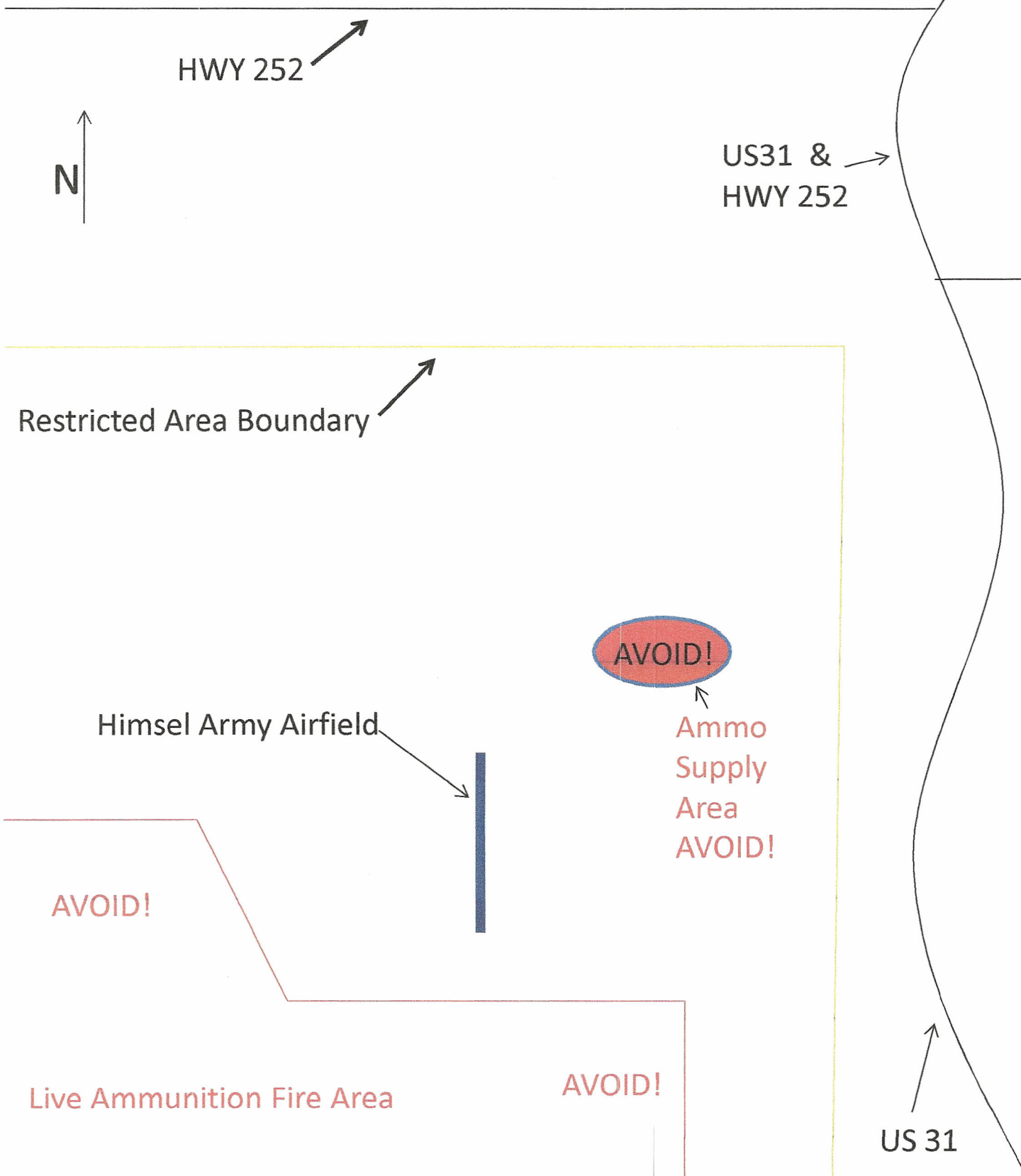


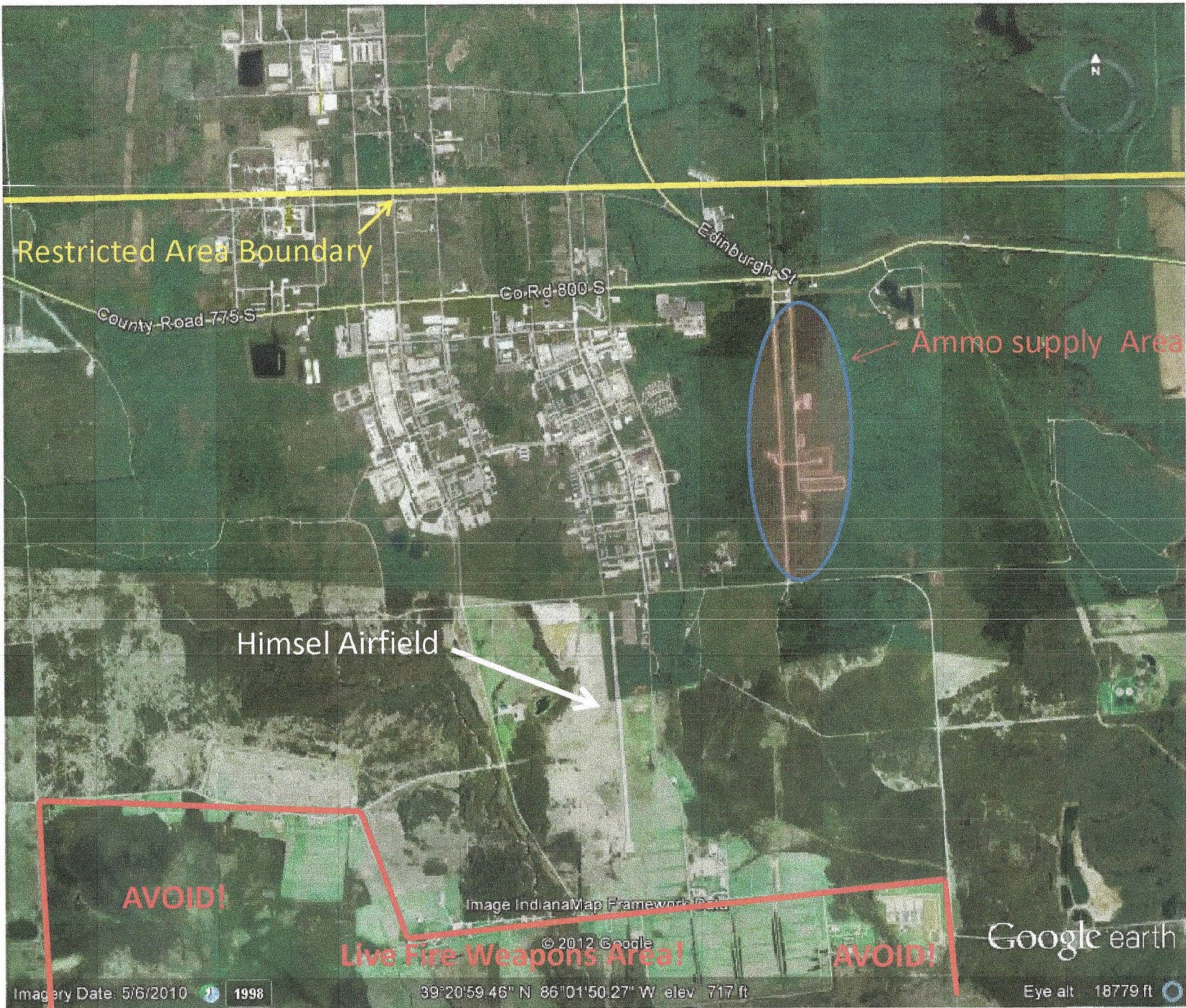
DAVID G. RADER II
Major, Aviation, Army National Guard
Airfield Commander

Attachments

3FK!

Please make initial calls 5-10 miles out





Restricted Area Boundary

Ammo supply Area

Himsel Airfield

AVOID!

Live Fire Weapons Area

AVOID!

Imagery Date: 5/6/2010 1998

39°20'59.46" N 86°01'50.27" W elev 717 ft

Eye alt 18779 ft

Google earth