



Southern California TRACON
Federal Aviation Administration
9175 Kearny Villa Road
San Diego, CA 92126-7099

ISSUED: September 15, 2009

EFFECTIVE: October 1, 2009

SOUTHERN CALIFORNIA TERMINAL RADAR APPROACH CONTROL
LETTER TO AIRMEN NO. 09-09

SUBJECT: Temporary Flight Restrictions for MCAS Miramar Air Show, San Diego, CA
October 1 through 4, 2009

CANCELLATION: October 5, 2009

Purpose: This Letter to Airmen is intended to clarify any issues regarding the Temporary Flight Restrictions (TFR's) that will be established for the Marine Corps Air Station (MCAS) Miramar Air Show, San Diego, CA, October 1 through 4, 2009. Because this is a major outdoor public event with a high concentration of high performance aircraft, the Federal Aviation Administration (FAA) in accordance with Federal Aviation Regulation 91.145 will issue three TFR's to provide a safe environment for the event and its participants.

Access to this airspace will be limited to those pre-authorized by MCAS Miramar as air show participants. Positive identification and communications with ATC will be required.

SEE ATTACHED GRAPHIC FOR DEPICTION OF TFR AIRSPACE

TFR # 1 supports the USN Blue Angel demonstration. The dates, times, dimensions and altitude of TFR #1 are:

Day	Date	Time
Thursday	October 1, 2009	1230 – 1645 LCL
Friday	October 2, 2009	1500 – 1659 LCL
Saturday	October 3, 2009	1445 – 1645 LCL
Sunday	October 4, 2009	1500 – 1659 LCL

A five (5) nautical mile radius of 32° 52' 10.7" N 117° 07' 58.2" W or the MZB026/007 **INCLUDING THE AIRSPACE SOUTH OF HWY 52 AND MONTGOMERY TOWER CLASS DELTA AIRSPACE.** Surface to 16,000 MSL.

TFR # 2 supports the Canadian Snow Birds. The dates, times, dimensions and altitude of TFR #2 are:

Day	Date	Time
Friday	October 2, 2009	1035 – 1134 LCL
Saturday	October 3, 2009	1035 – 1134 LCL
Saturday	October 4, 2009	1035 – 1134 LCL

A five (5) nautical mile radius of 32° 52' 10.7" N 117° 07' 58.2" W or the MZB026/007 **INCLUDING THE AIRSPACE SOUTH OF HWY 52 AND MONTGOMERY TOWER CLASS DELTA AIRSPACE.** Surface to 16,000 MSL.

TFR # 3 supports other high performance aerial demonstrations. The dates, times, dimensions and altitude of TFR #3 are:

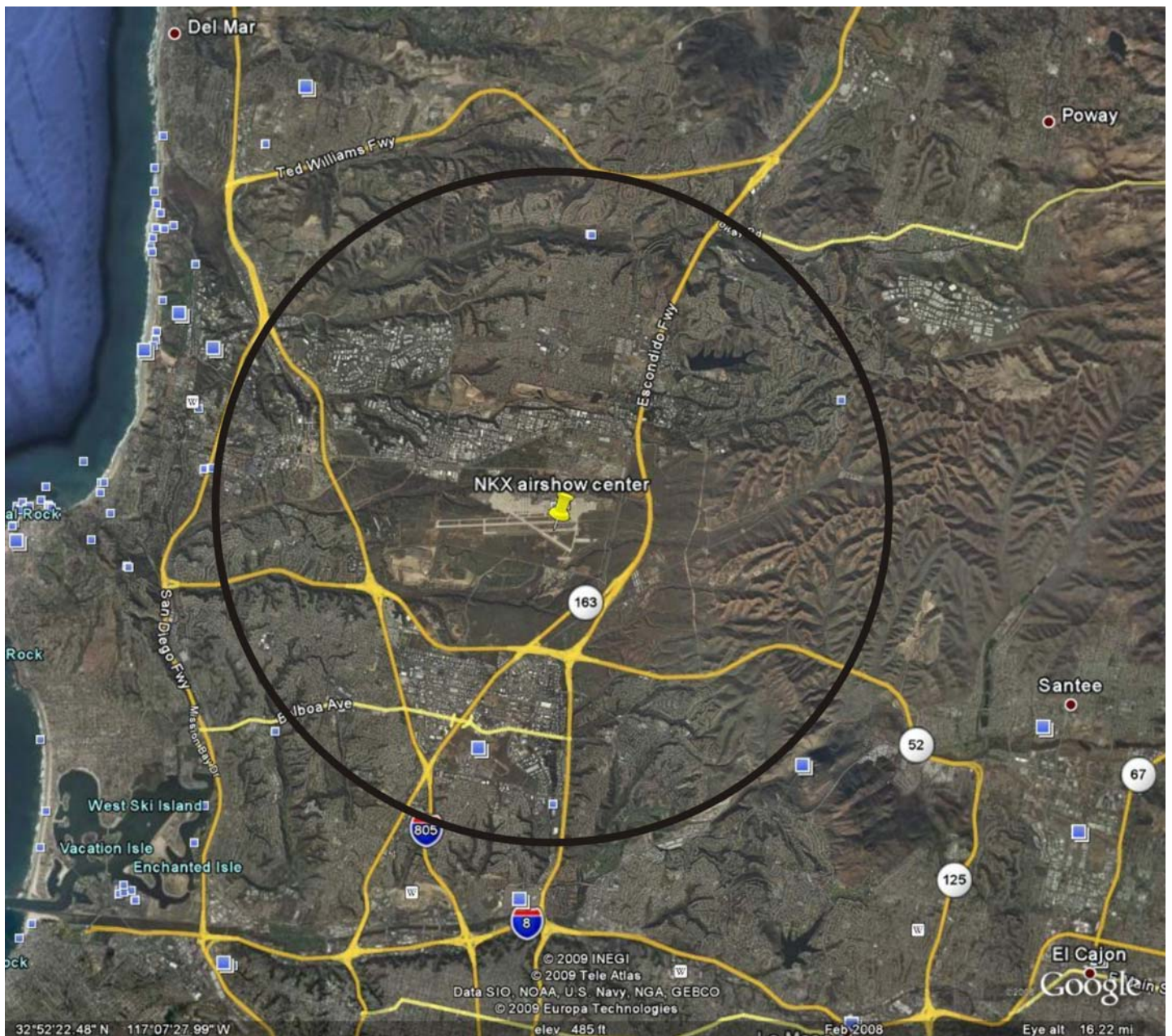
Day	Date	Time
Friday	October 2, 2009	1135 – 1459 LCL
Saturday	October 3, 2009	1135 – 1444 LCL
Saturday	October 3, 2009	1730 – 2100 LCL
Sunday	October 4, 2009	1135 – 1459 LCL

A five (5) nautical mile radius of 32° 52' 10.7" N 117° 07' 58.2" W or the MZB026/007 **EXCLUDING MONTGOMERY TOWER CLASS DELTA AIRSPACE.** Surface to 16,000 MSL.

- Pilots are strongly encouraged to check NOTAMs the week prior to the air show, as events could occur requiring changes to airspace or effective hours.
- Information regarding the status of the MCAS Miramar TFR's will be available from San Diego AFSS's.
- Authorization to operate in the TFR is NOT authorization to operate in the San Diego Class B Airspace, and a clearance into Class B airspace is NOT authorization to enter the TFR.
- The recommended routing for air traffic desiring to transit the San Diego area from the north or south is to remain west of the I-5 Freeway and at least 8 miles east of MCAS Miramar.
- **CAUTION:** FAA strongly encourages pilots to comply with the Federal Aviation Regulations applicable to the Temporary Flight Restrictions. Pilots who enter the TFR airspace without ATC permission can expect to be identified and subjected to FAA investigation.

The FAA has worked closely with the United States Marine Corps to minimize the impact of this TFR on Southern California aviators. Compliance with these rules will ensure the safety of the air show, provide reasonable access to airspace for all pilots, and greatly reduce TFR violations. If you have any questions on this matter, please call Cheryl Jones, FAA Air Traffic Representative at (858) 577-1637.

Charles A. Ullmann
Air Traffic Manager
Southern California Terminal Radar Approach Control



PLEASE NOTE that the TFR that includes airspace south of Highway 52 also includes the **ENTIRE** Montgomery Airport Class D airspace.