

Aircraft Taxi Plan

for

Project 10113362

Rehabilitate TW D, Shoulders, and Connectors

May 17, 2019

Revised July 16, 2019

Proposed Air Traffic Mitigations for Taxiway Delta Construction Project

During the construction of this project, Air Traffic Control Tower (ATCT) is not planning on using Runway (RW) 3/21 unless it is operationally necessary, i.e. aircraft emergencies or scheduled shutdown of RW 11L resulting in RW 3/21 being the active, or when winds and weather dictate the use of RW 3/21 as the active.

During construction Phases 1, 2, and 3, RW 3/21 must be used as a Taxiway (TW). At times, aircraft will need to taxi or back taxi from TW D1 to either TW A2 or TW B.

During Phase 1, RW 3/21 will be temporarily restricted to an Airplane Design Group (ADG) – II (max. wingspan 79-feet).

Phase 2 includes the construction and closure of the intersection of TW D and TW A. Both RW 3/21 and RW 11R/29L will be used as taxiways. ATCT does not intend to use either of these runways for arrivals or departures during this phase, unless it is operationally necessary. Tucson International Airport (TUS) will essentially be a one runway airport. It would be very helpful if U90 agreed to provide sequencing with built in departure holes during known departure pushes.

The ATCT OS/CIC will contact U90 OS/CIC each shift as necessary to request appropriate spacing for the operations and situations at hand.

One suggested mean of accomplishing the necessary spacing is U90 agreeing to slow inbound aircraft at JOKIM, SSAND, and DINGO to 250 KTS, and further slow aircraft at TACUB and VEDTU to 210 KTS.

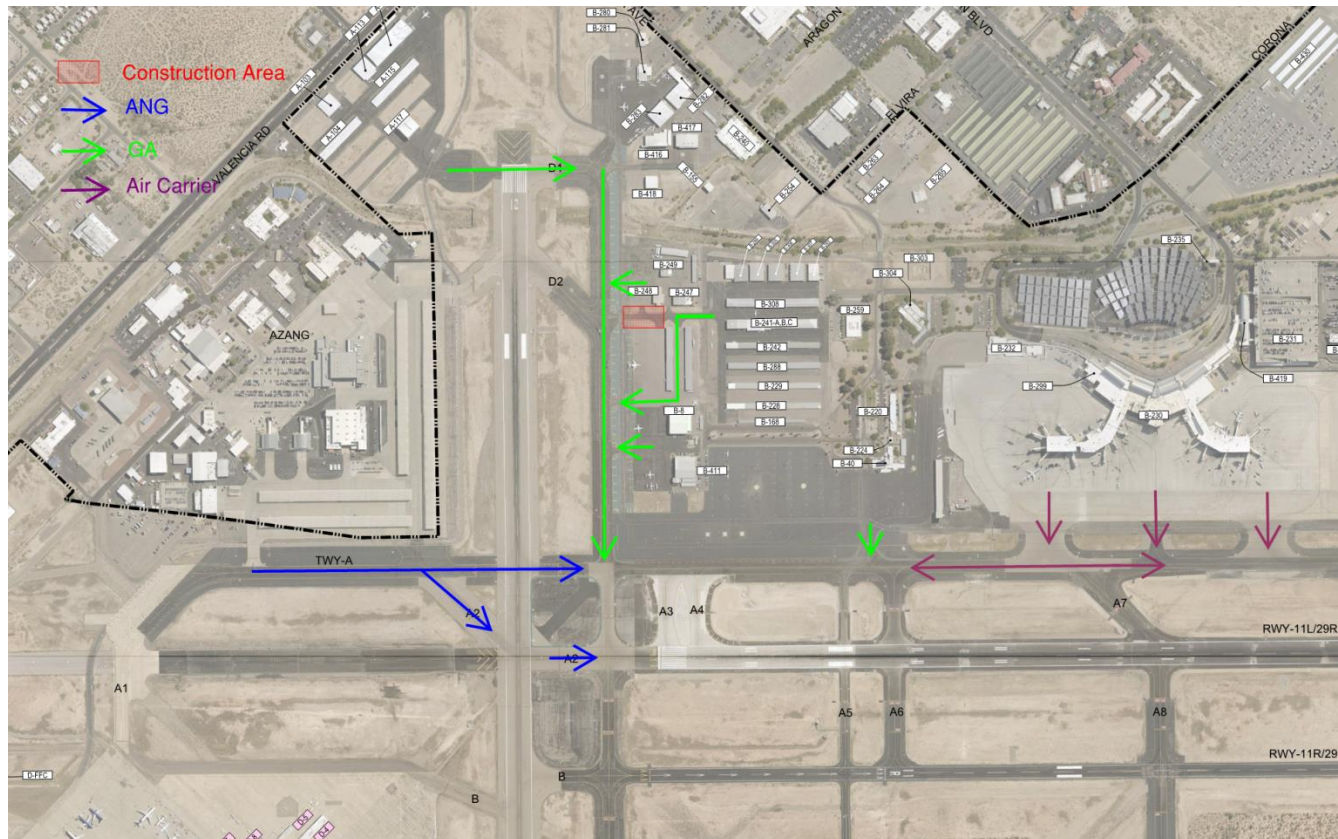
During the construction, if RW 3/21 has to be used as the active runway, ATCT may need as much as 15-20 MIT. During phases 1, 2, and 4 all aircraft departing RW 21 will need to back taxi up to 4,000 feet and make 180-degree turn to depart. During Phase 3, all aircraft landing RW 21 must make 180-degree and back taxi. Air Carriers and F-16s will need to back taxi between 3,500 – 5,000 feet.

The time of year when it will be most common for RW 3/21 to be in use due to winds is during Phase 3. Air Carriers departing to RW 3 will need to back taxi from TW A to TW D3 and make a 180-degree turn for departure so the MIT required would be significantly less.

ATCT, in conjunction with ARFF, TAA, AOPA, and FFAST Team, have developed detailed taxiway routes that utilize taxi hold areas and designated taxi stops. Detailed progressive taxi instructions will be crucial to taxi and ground movement.

Phase 1A

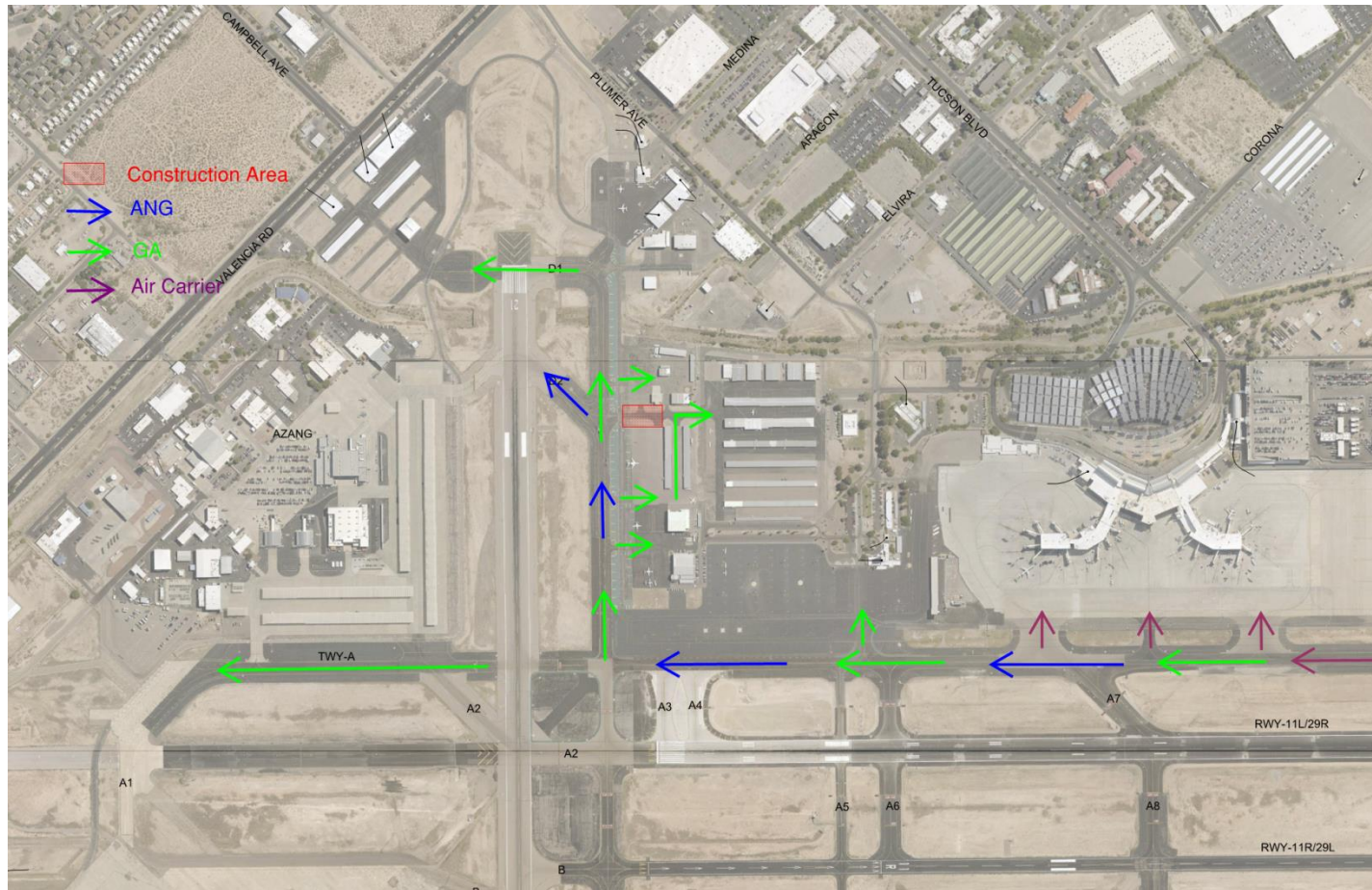
RW 11L/29R & 11R/29L Departure



- Taxilane leading into General Aviation (GA) B-1 (Condos) closed for demolition and construction of taxilane fillet improvements. Duration 7 days.
- No taxi restrictions to AZ ANG and Air Carrier traffic.
- GA aircraft exiting GA B-1 Condos will taxi via Atlantic Aviation FBO ramp between aircraft shade ports to TW D.

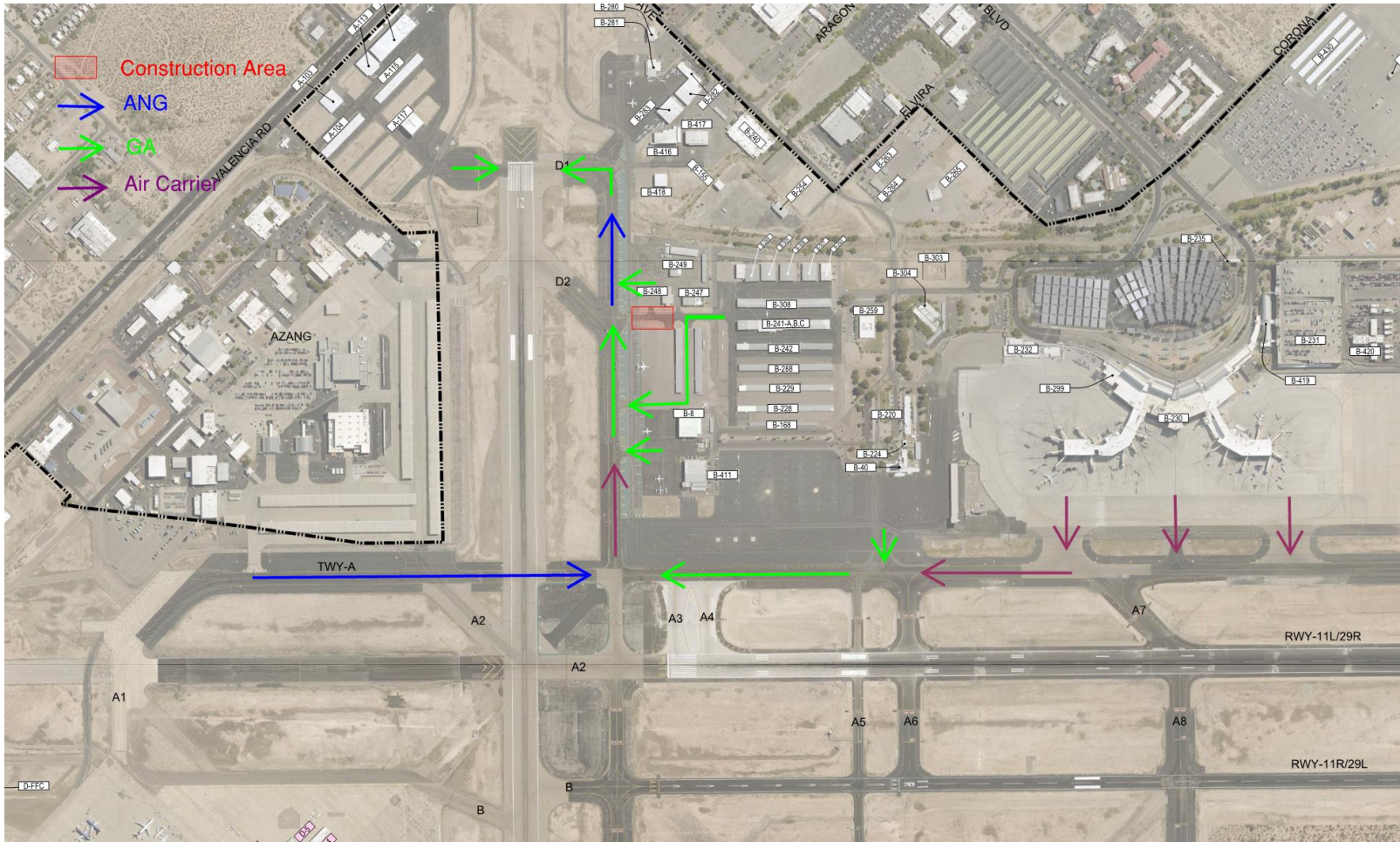
Phase 1A

RW 11L/29R & 11R/29L Arrival



- Taxilane leading into General Aviation (GA) B-1 (Condos) closed for demolition and construction of taxilane fillet improvements. Duration 7 days.
- No taxi restrictions to AZ ANG and Air Carrier traffic.
- GA aircraft taxiing to GA B-1 Condos will use Atlantic Aviation FBO ramp between aircraft shade ports.

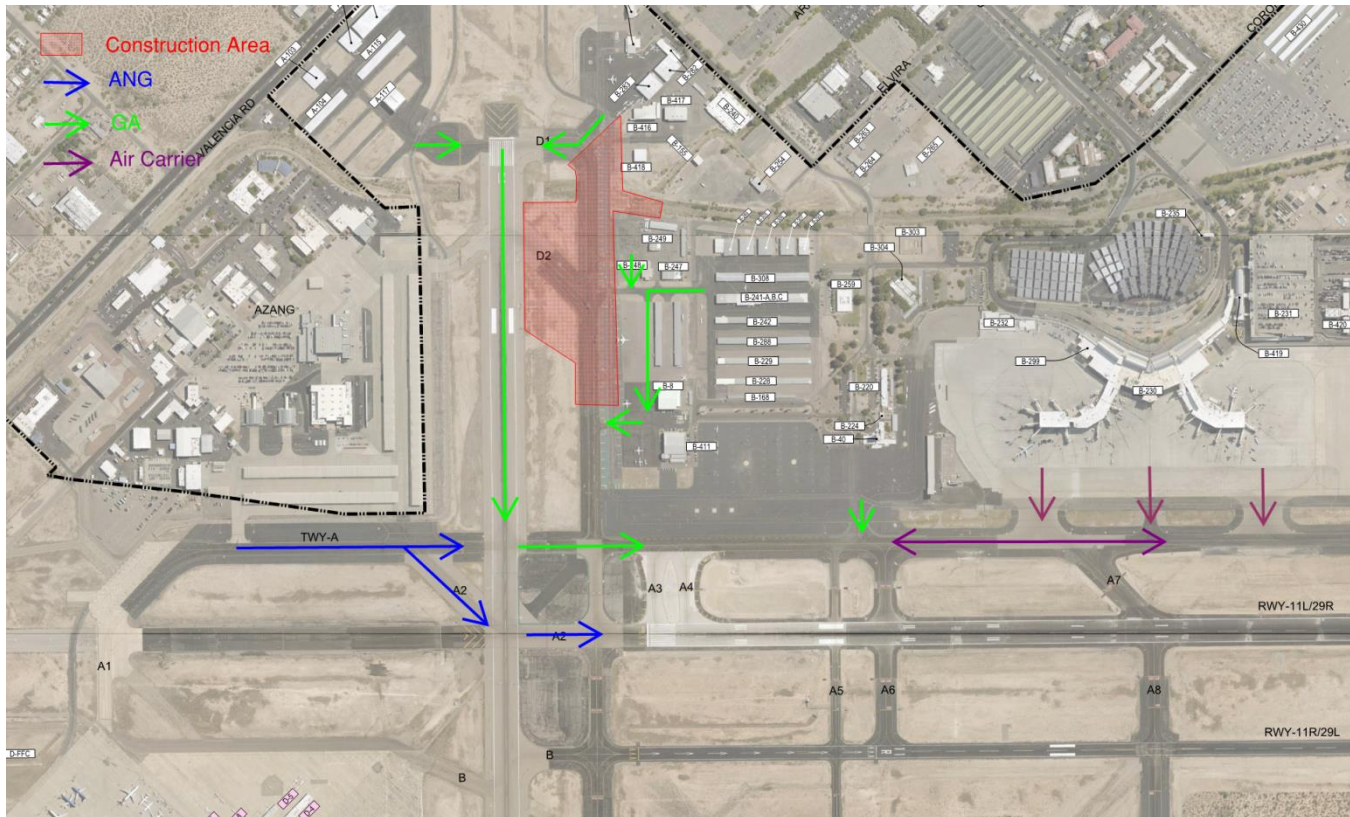
RW 21 Departure



- Taxilane leading into General Aviation (GA) B-1 (Condos) closed for demolition and construction of taxilane fillet improvements. Duration 7 days.
- No taxi restrictions to AZ ANG and Air Carrier traffic to TW D.
- GA aircraft existing GA B-1 Condos will taxi via Atlantic Aviation between aircraft shade ports to TW D.

Phase 1B

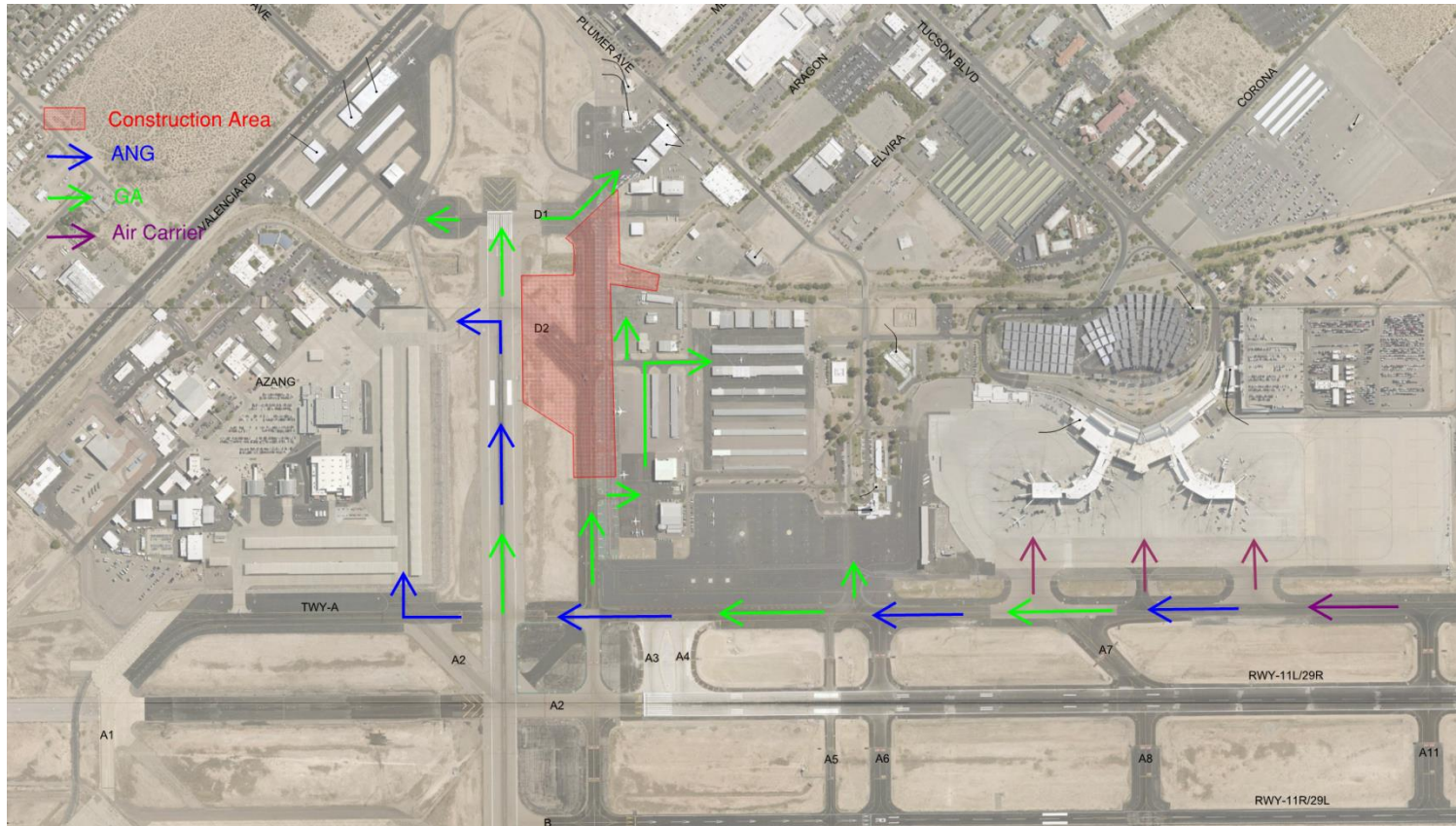
RW 11L/29R & RW 11R/29L Departure



- Demolition and Construction of TW D, D2, south half of the TW D/D1 intersection, TW D Service Road, and Airport Wash Improvements. Relocation of RW 21 PAPI/REIL power rack. Duration 70 days.
- Temporary RW 3/21 restricted to Visual Airplane Design Group (ADG) –II (79-feet Wingspan).
- No taxi restrictions for AZ ANG and Air Carrier traffic.
- GA aircraft departing from Hotton Aviation FBO and GA B-1 Condos will taxi via Atlantic Aviation FBO ramp to TW D.
- GA aircraft departing Million Air and Tucson Jet Center require taxiing via RW 3/21 to TW A.

Phase 1B

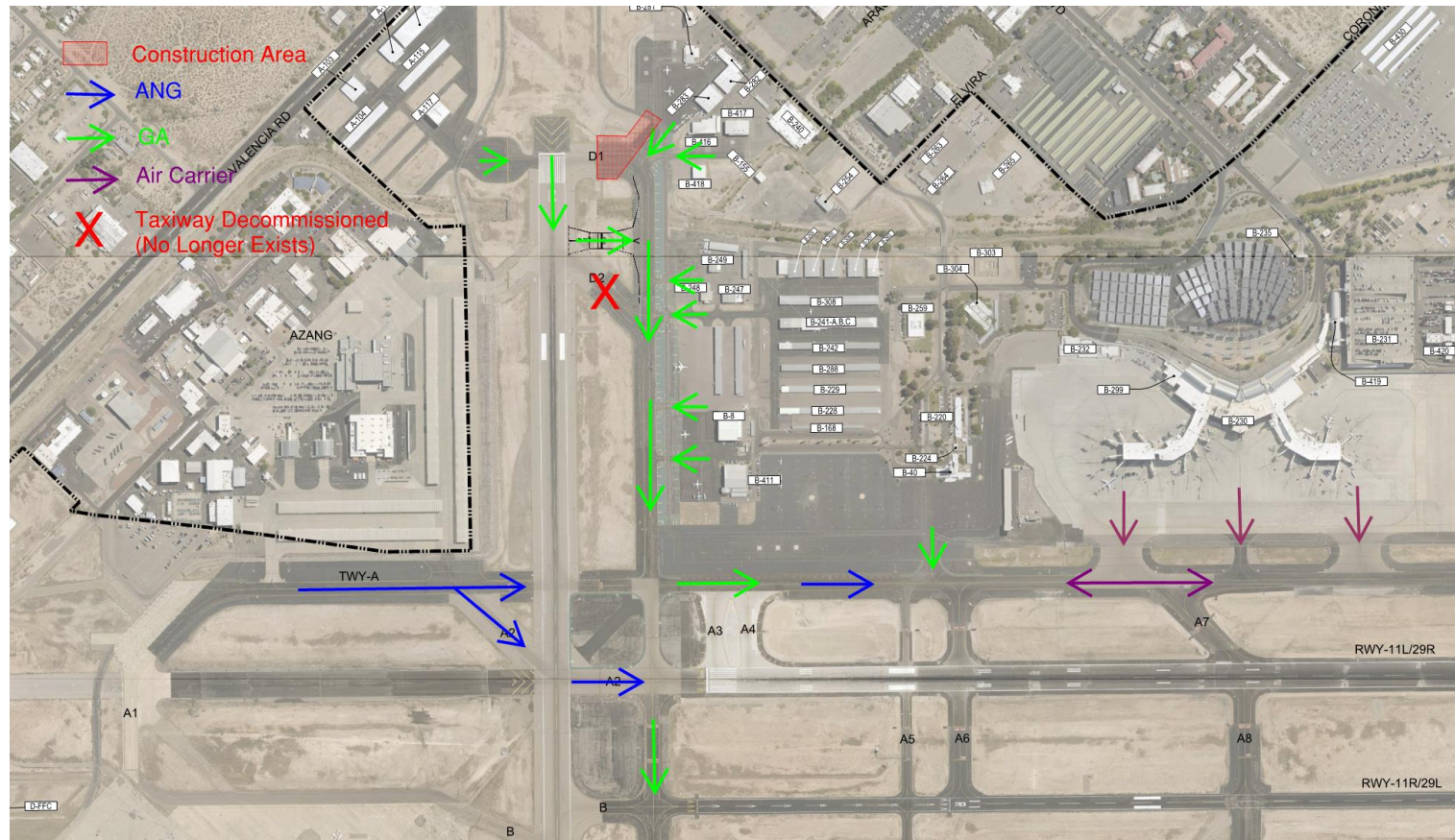
RW 11L/29R and RW 11R/29L Arrival



- Demolition and Construction of TW D, D2, south half of the TW D/D1 intersection, TW D Service Road, and Airport Wash Improvements. Relocation of RW 21 PAPI/REIL power rack. Duration 70 days.
- Temporary RW 3/21 restricted to Visual Airplane Design Group (ADG) –II (79-feet Wingspan).
- No taxi restrictions for Air Carrier traffic.
- GA aircraft taxiing to Hotton Aviation FBO and GA B-1 Condos will taxi via Atlantic Aviation FBO ramp.
- GA aircraft taxiing Million Air and Tucson Jet Center require taxiing via RW 3/21.
- AZ ANG taxiing to base require taxiing via RW 3/21 to Charlie (C) Gate or Bravo (B) Gate as directed by AZ ANG.

Phase 1C

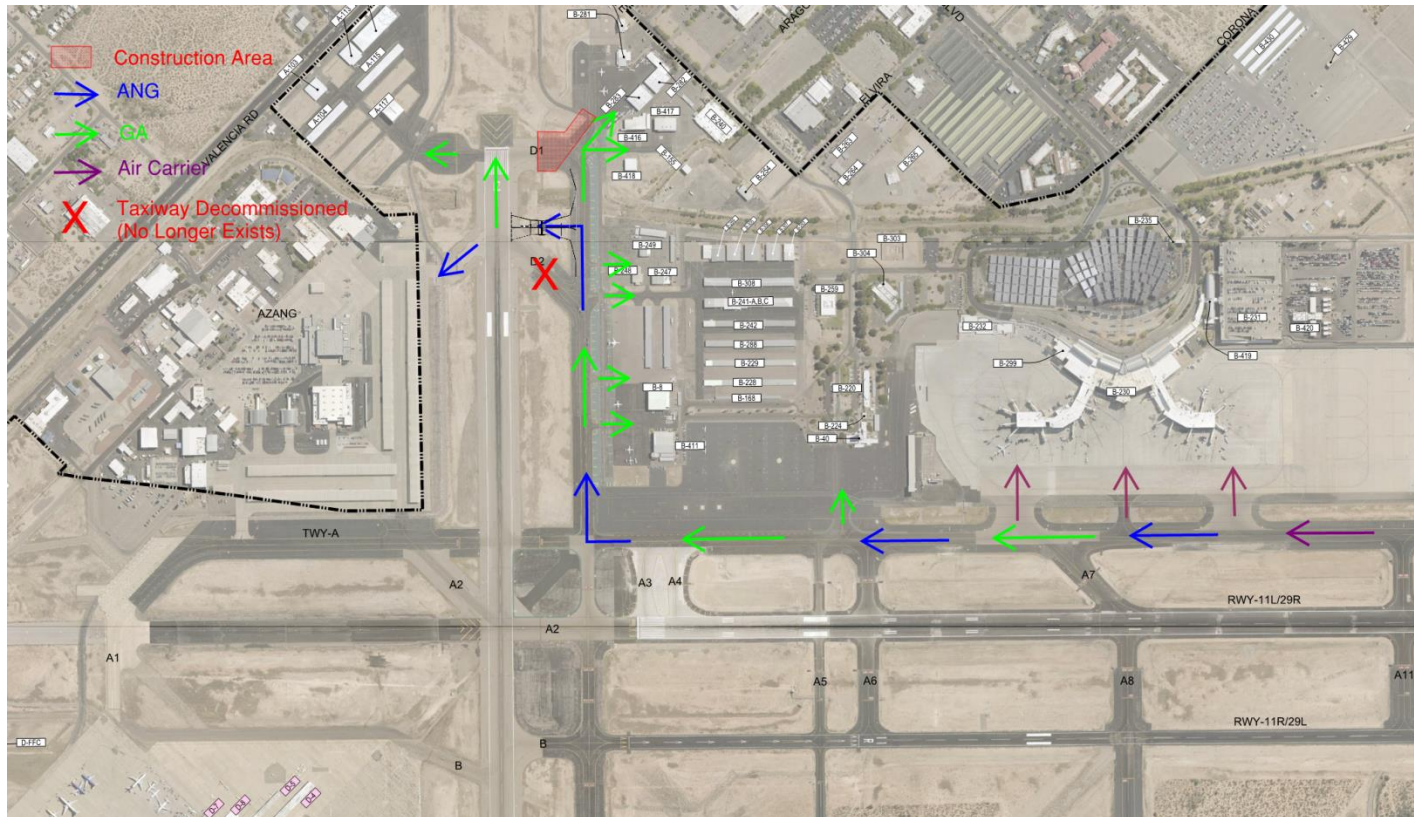
RW 11L/29R & RW 11R/29L Departures



- Demolition and Construction of TW D1 through the north half of the intersection of TW D/D1. Duration 14 days.
- TW D1 closed.
- New TW D2 alignment. Old TW D2 removed.
- RW 3/21 temporarily restricted to ADG-II (79-foot wingspan max).
- No taxi restrictions for AZ ANG and Air Carrier traffic.
- GA aircraft taxiing from Million Air will require to taxi via RW 3/21 to New TW D2.

Phase 1C

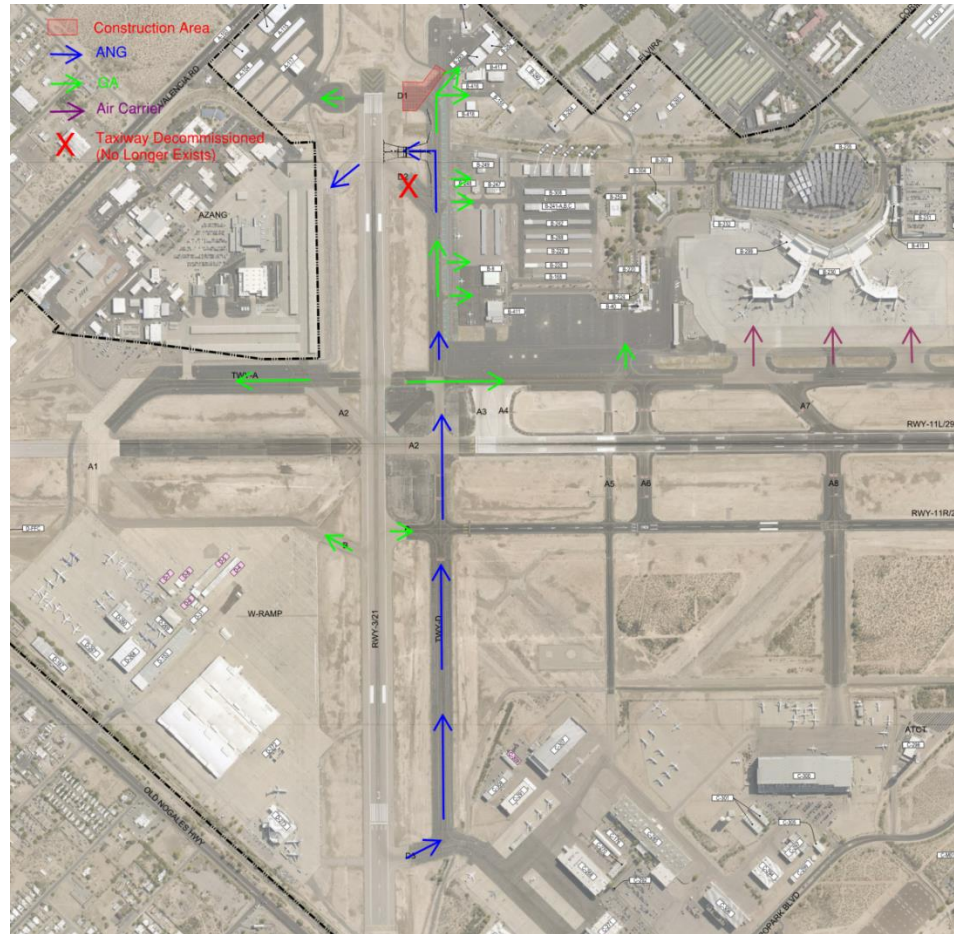
RW 11L/29R and RW 11R/29L Arrival



- Demolition and Construction of TW D1 through the north half of the intersection of TW D/D1. Duration 14 days.
- TW D1 closed.
- New TW D2 alignment. Old TW D2 removed.
- RW 3/21 temporarily restricted to ADG-II (79-foot wingspan max).
- AZ ANG shall taxi to base via New TW D2 to Charlie (C) Gate.
- GA aircraft taxiing to Million Air will require to taxi via New TW D2 to RW 3/21.

Phase 1C

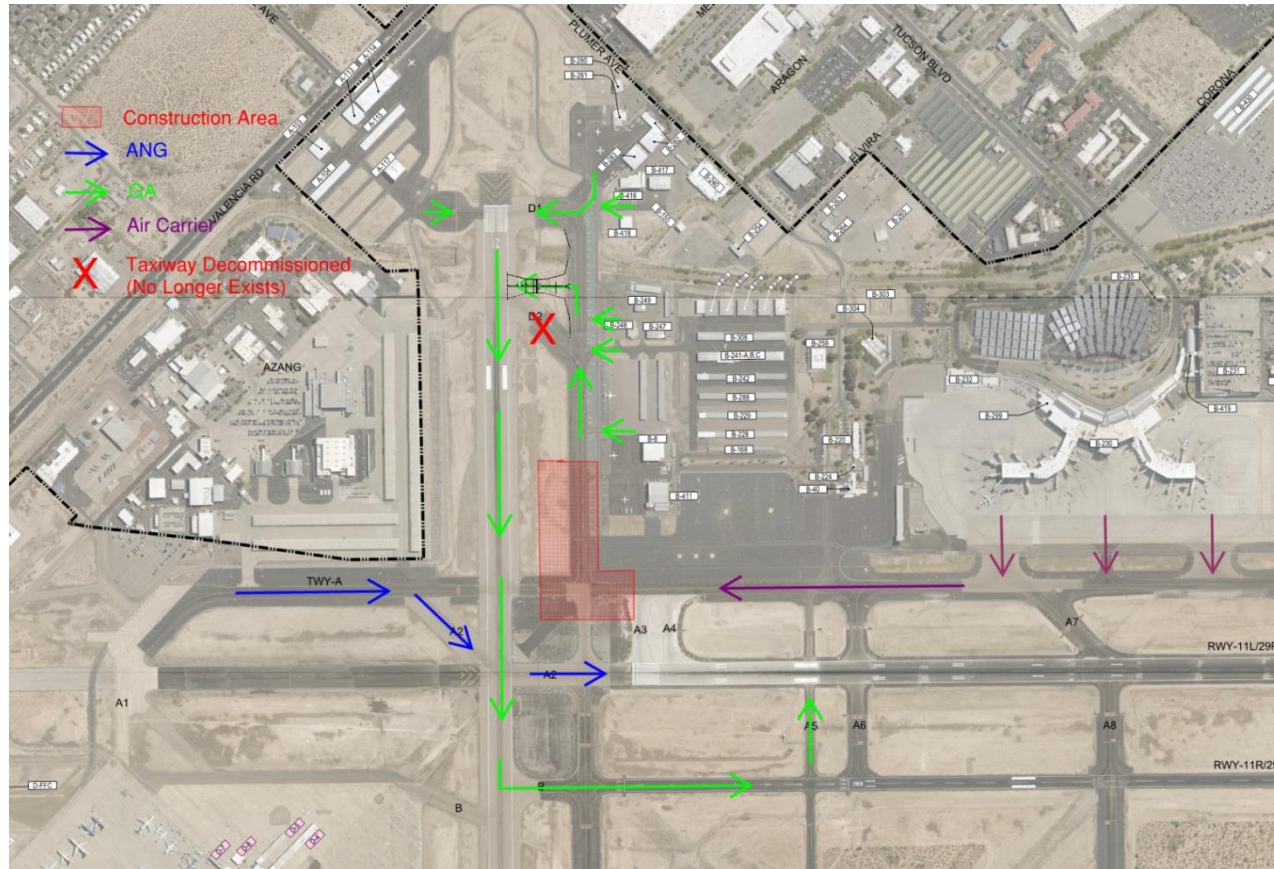
RW 21 Arrival



- Demolition and Construction of TW D1 through the north half of the intersection of TW D/D1. Duration 14 days.
- TW D1 closed.
- New TW D2 alignment. Old TW D2 removed.
- RW 3/21 temporarily restricted to ADG-II (79-feet wingspan max).
- AZ ANG shall taxi to base via New TW D2 to Charlie (C) Gate.
- GA aircraft taxiing to Million Air will require to taxi via New TW D2 to RW 3/21.

Phase 2

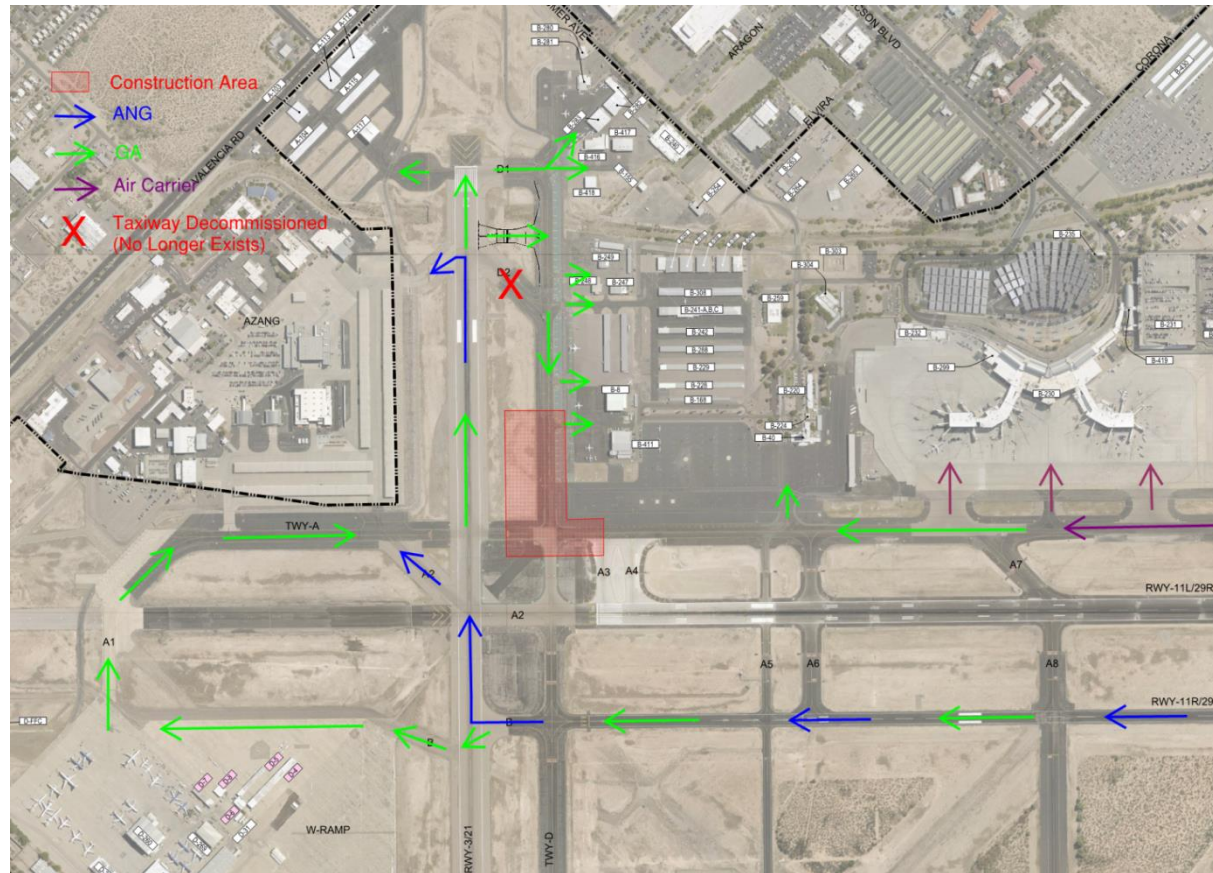
RW 11L/29R & RW 11R/29L Departure



- Demolition and Construction of portion of TW D west of Atlantic Aviation FBO and intersection of TW D/A. Duration 35 days.
- New TW D2 alignment. Old TW D2 removed.
- No taxi restrictions to AZ ANG and Air Carrier traffic.
- AZ ANG shall taxi to base via New TW D2 to Charlie (C) Gate.
- GA aircraft taxiing from the north (Million Air FBO) and northeast (Atlantic Aviation FBO) will require to taxi via RW 3/21 or via New TW D2 to RW 3/21. Exit via TW B to RW 11R/29L departure or via TW A5 for RW 11L/29R departure.

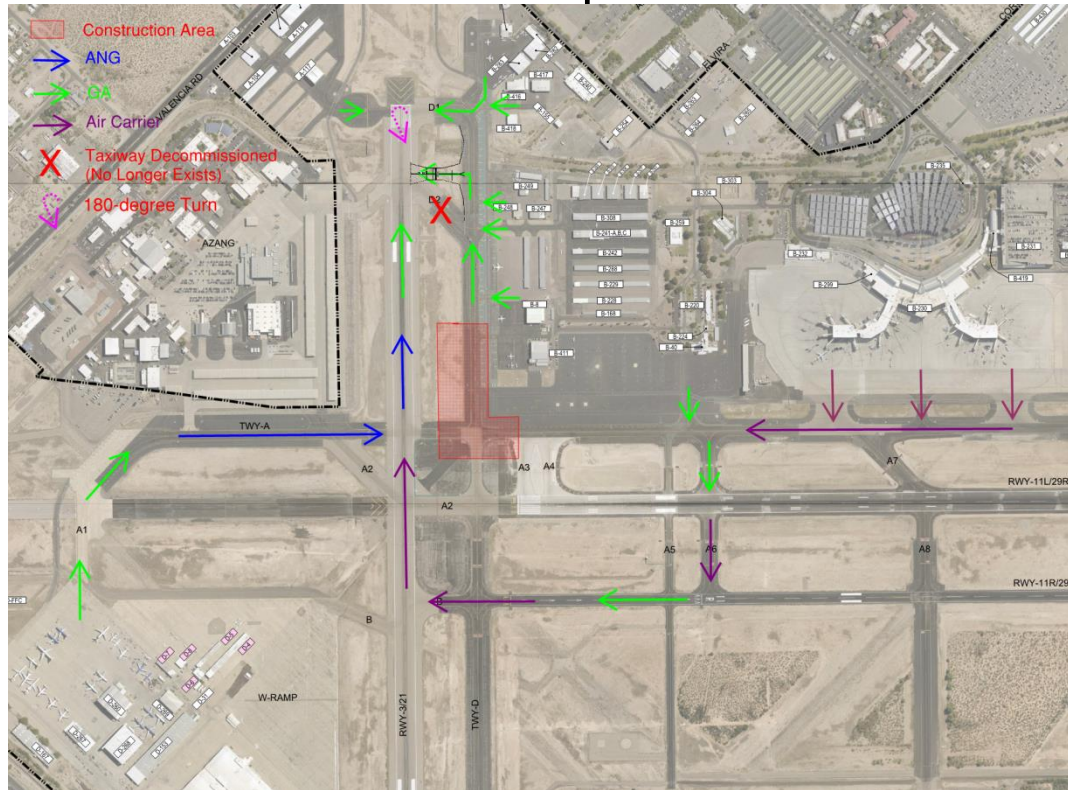
Phase 2

RW 11L/29R and RW 11R/29L Arrival



- Demolition and Construction of portion of TW D west of Atlantic Aviation FBO and intersection of TW D/A. Duration 35 days.
- New TW D2 alignment. Old TW D2 removed.
- No taxi restrictions to Air Carrier traffic.
- AZ ANG shall taxi to base via RW 11R/29L to RW 3/21 to Charlie (C) Gate or to Bravo (B) Gate as directed by AZ ANG.
- GA aircraft taxiing the north (Million Air FBO) and northeast (Atlantic Aviation FBO) will require to taxi via RW 11R/29L to RW 3/21 to New TW D2 or TW D1.

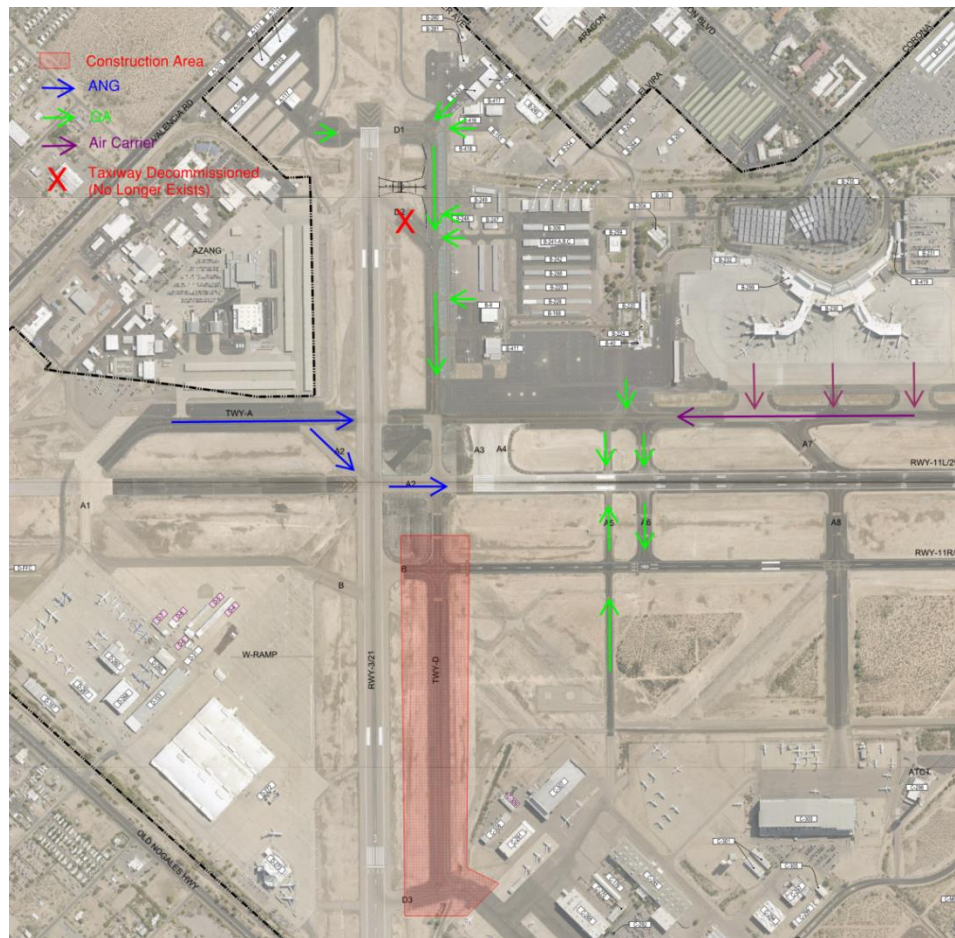
Phase 2 RW 21 Departure



- Demolition and Construction of portion of TW D west of Atlantic Aviation FBO and intersection of TW D/A. Duration 35 days.
- New TW D2 alignment. Old TW D2 removed.
- Air Carrier traffic shall taxi on TW A to A6. Cross RW 11L/29R, back taxi on RW 11R/29L to RW 21, perform 180-degree turn on RW 21 end.
- AZ ANG shall taxi to RW 21 via TW A, back taxi on RW 21, perform 180-degree turn on RW 21 end.
- GA aircraft taxiing the north (Million Air FBO), northeast (Atlantic Aviation FBO) and GA Area B-1 (Condos) will require to taxi via TW D to TW D1 or TW D2. GA aircraft taxiing from west ramp will taxi via TW A1, TWA, back taxi on RW 21, perform 180-degree turn on RW 21 end.

Phase 3

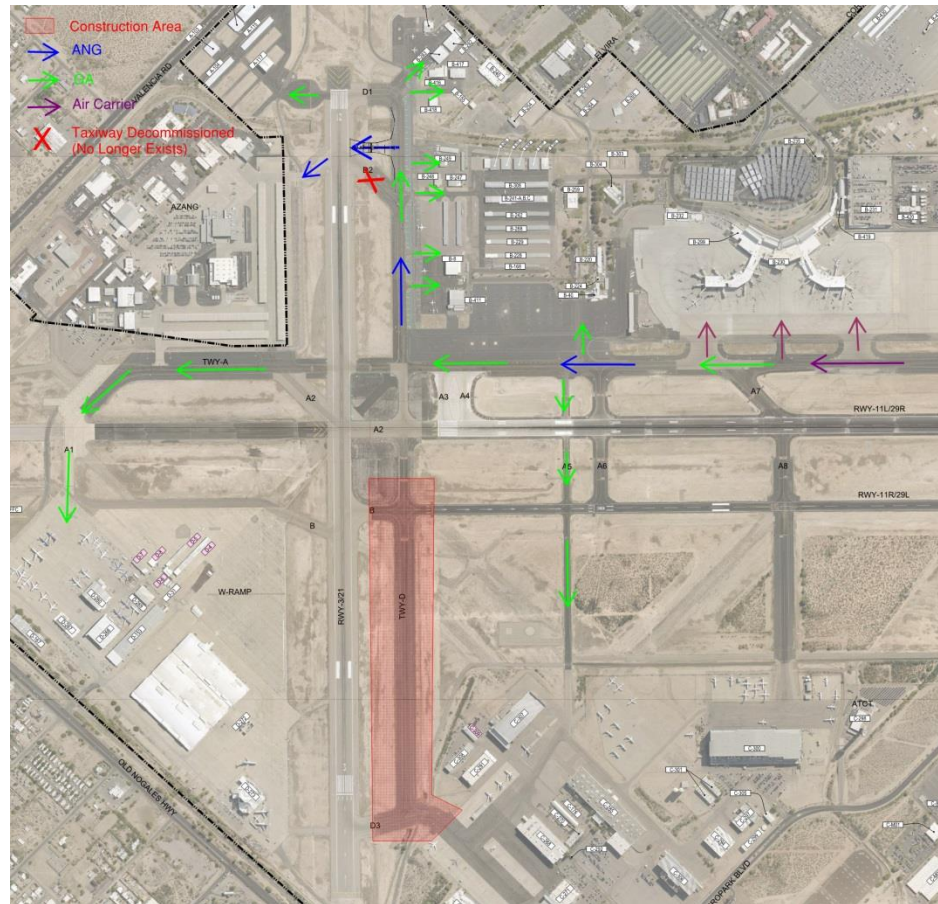
RW 11L/29R & RW 11R/29L Departure



- Demolition and Construction of TW D from west of RW 11R to and including TW D3. Duration 55 days.
- No taxiing restrictions to AZ ANG and Air Carrier traffic.
- TW D south of RW 11L/29R is closed during construction.
- TW D3 closed during construction.
- GA aircraft taxiing to/from Bombardier shall use TW A5.

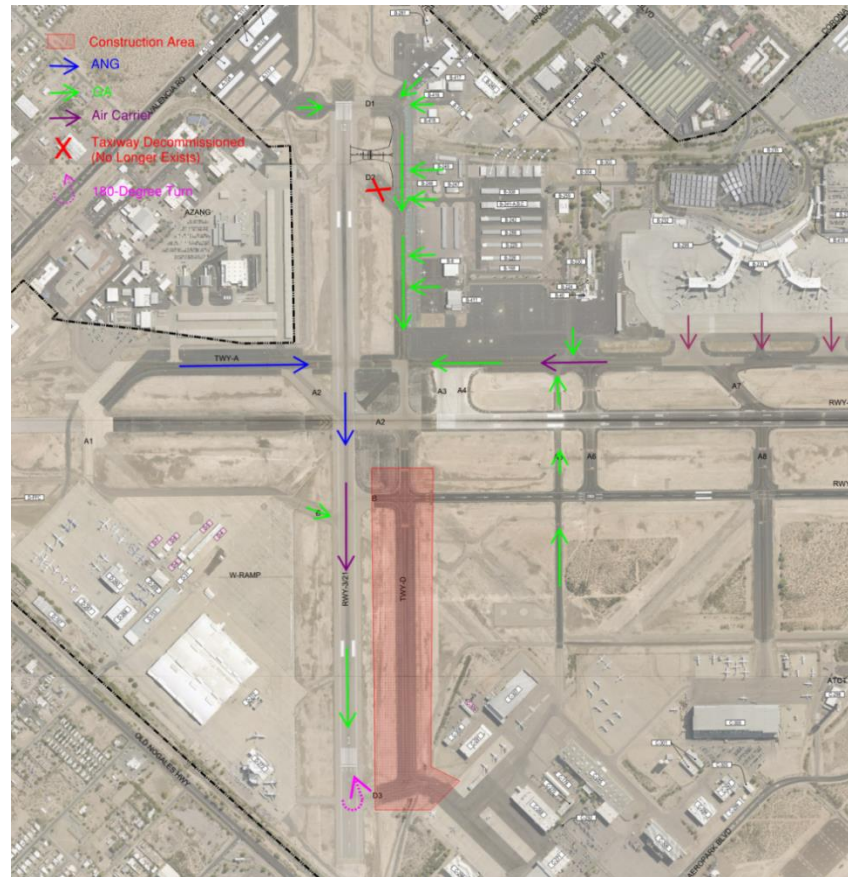
Phase 3

RW 11L/29R & RW 11R/29L Arrival



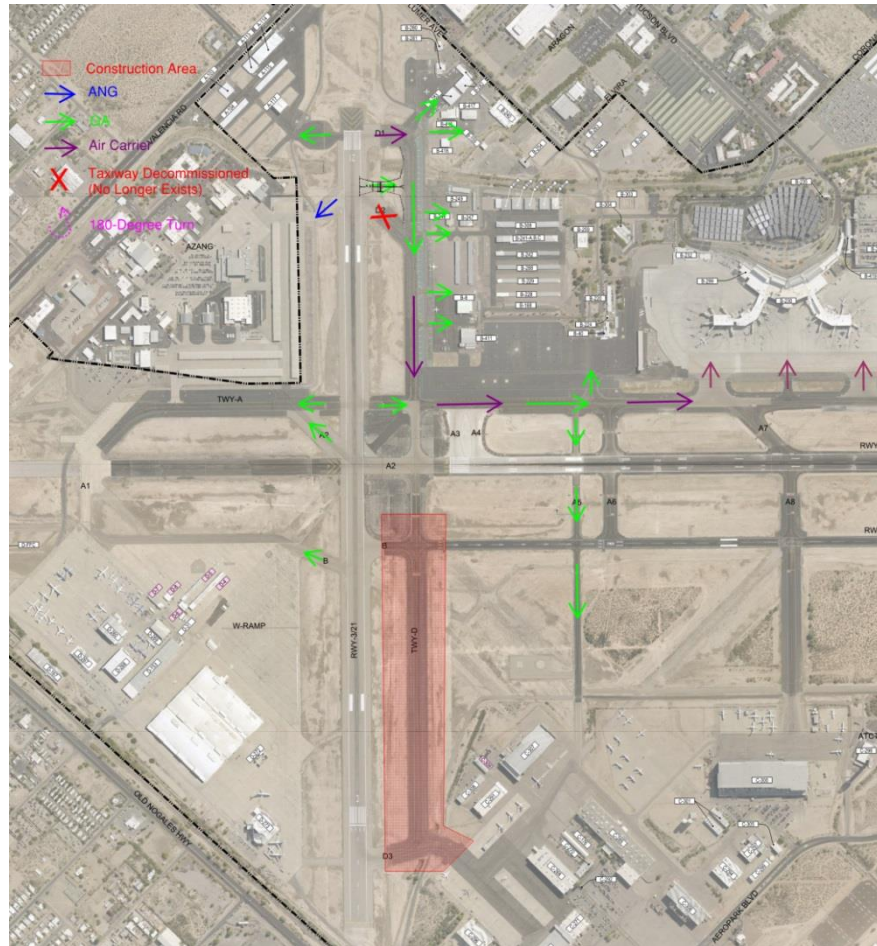
- Demolition and Construction of TW D from west of RW 11R to and including TW D3. Duration 55 days.
- No taxiing restrictions to AZ ANG and Air Carrier traffic.
- New TW D2 in use. Old TW D2 removed.
- TW D south of RW 11L/29R is closed during construction.
- TW D3 closed during construction.
- GA aircraft taxiing to/from Bombardier shall use TW A5.

Phase 3 RW 3 Departure



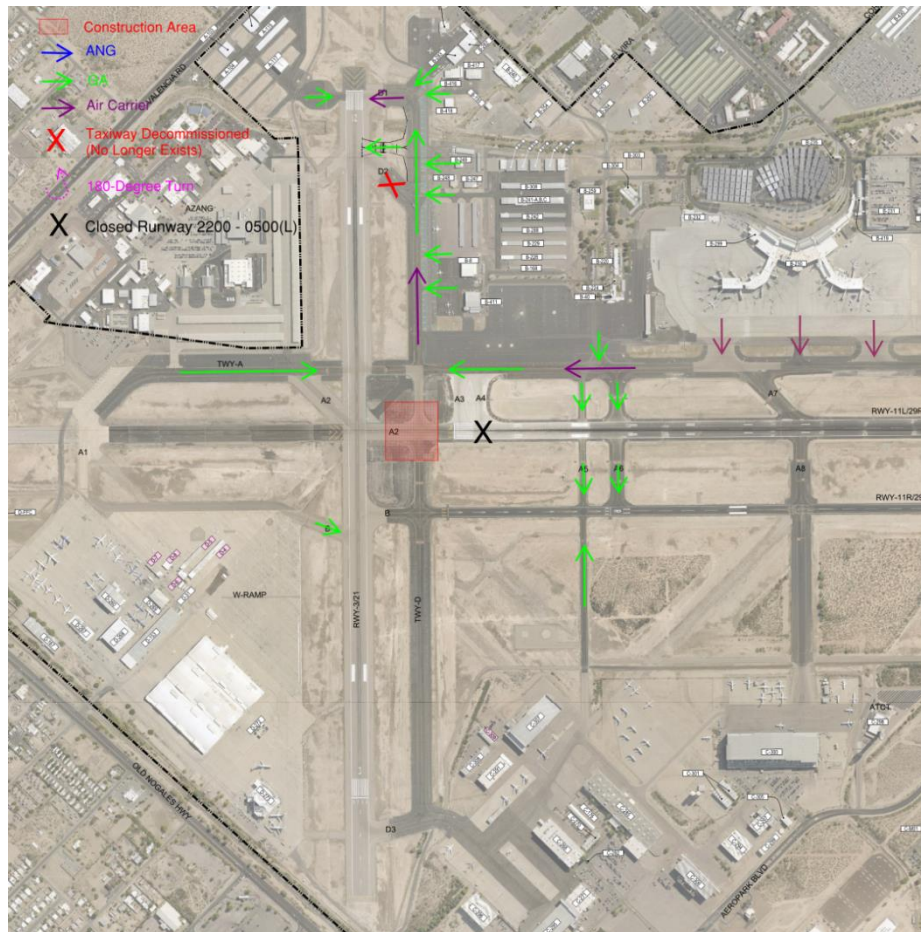
- Demolition and Construction of TW D from west of RW 11R to and including TW D3. Duration 55 days.
- GA, AZ ANG, and Air Carrier will taxi on to RW 3/21, perform 180-degree turn at approach end RW 3 to depart.
- New TW D2 in use. Old TW D2 removed.
- TW D south of RW 11L/29R is closed during construction.
- TW D3 closed during construction.
- GA aircraft taxiing to/from Bombardier shall use TW A5.

Phase 3 RW 3 Arrival



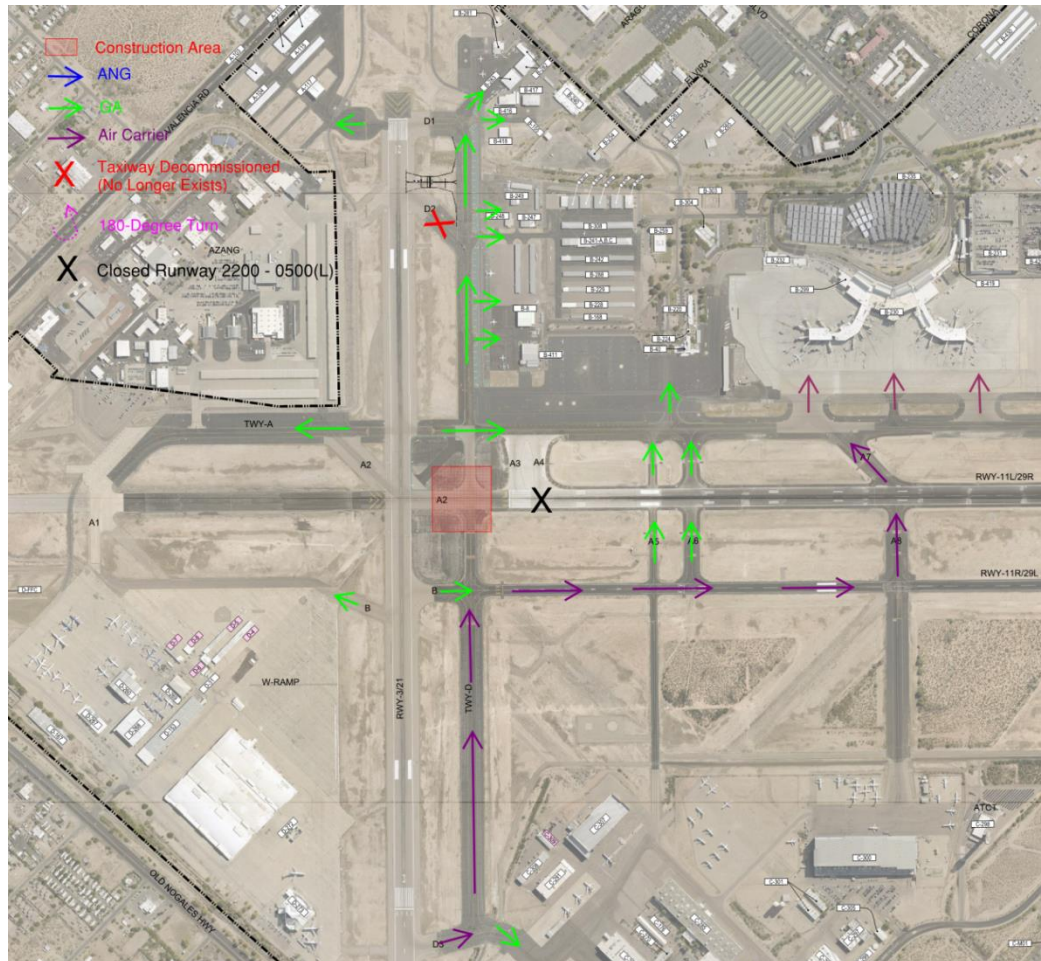
- Demolition and Construction of TW D from west of RW 11R to and including TW D3. Duration 55 days.
- New TW D2 in use. Old TW D2 removed.
- TW D south of RW 11L/29R is closed during construction.
- TW D3 closed during construction.
- GA aircraft taxiing to/from Bombardier shall use TW A5.

Phase 4 RW 21 Departure



- Demolition and Construction of TW D and RW 11L intersection. Work will be conducted at night between 2200 – 0500 (L) and shall be re-opened each morning at 0500 (L). Duration 17 days.
- RW 11L/29R will be closed between 2200 – 0500 (L).
- No taxiing restrictions for GA, AZ ANG, and Air Carrier traffic after 0500 (L).
- GA, AZ ANG, or Air Carrier aircraft operating between 2200-0500 (L) will depart using RW 21.

Phase 4 RW 21 Arrival



- Demolition and Construction of TW D and RW 11L intersection. Work will be conducted at night between 2200 – 0500 (L) and shall be re-opened each morning at 0500 (L). Duration 17 days.
- RW 11L/29R will be closed nightly between 2200 – 0500 (L).
- No taxiing restrictions for GA, AZ ANG, and Air Carrier traffic after 0500 (L).
- GA, AZ ANG, or Air Carrier aircraft operating between 2200-0500 (L) will arrive using RW 21.