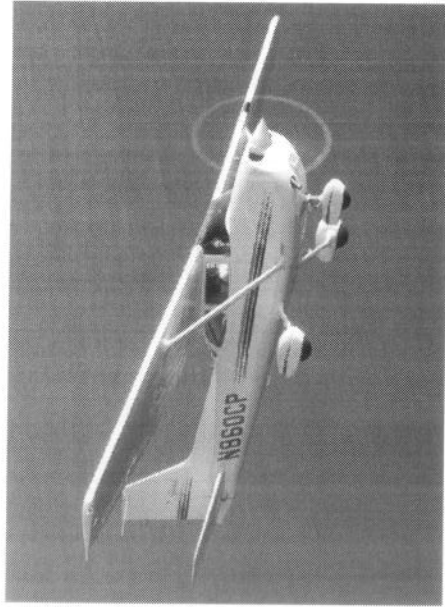


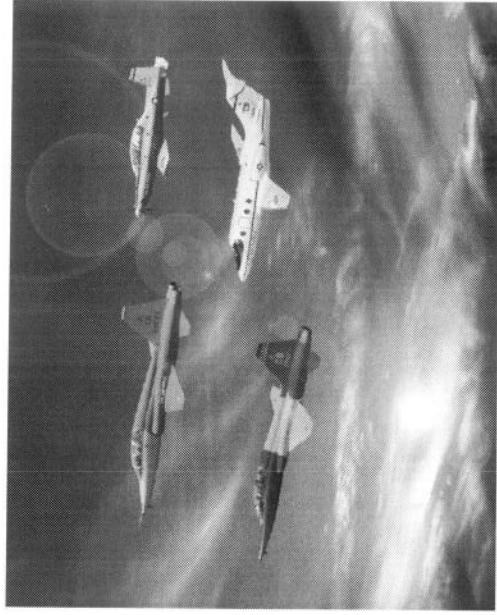
DON'T FORGET!!!

TURN IN your FLIGHT PLAN
before leaving the Columbus
Club in the morning and call for
taxi clearance.

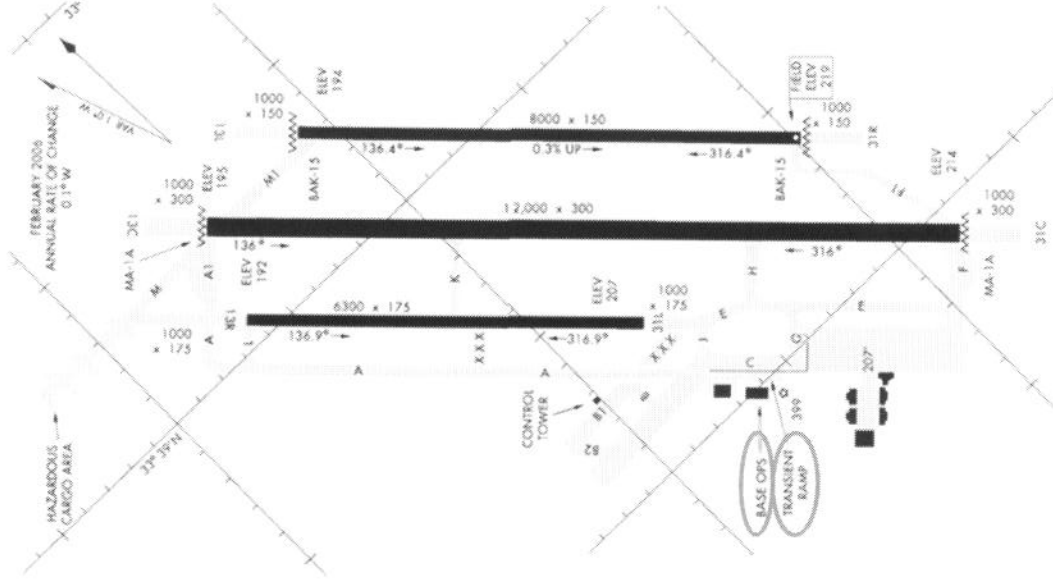


Please give us accurate and
descriptive feedback on the
Survey so that we may continue
to make the Civil Fly-In a fun
event for All!!!

**COLUMBUS
AIR FORCE BASE
2012 Civil Fly-In
WELCOME**



14 FTW/SE
555 Seventh St, Suite 240
CAFB, MS 39710
(662) 434-2842



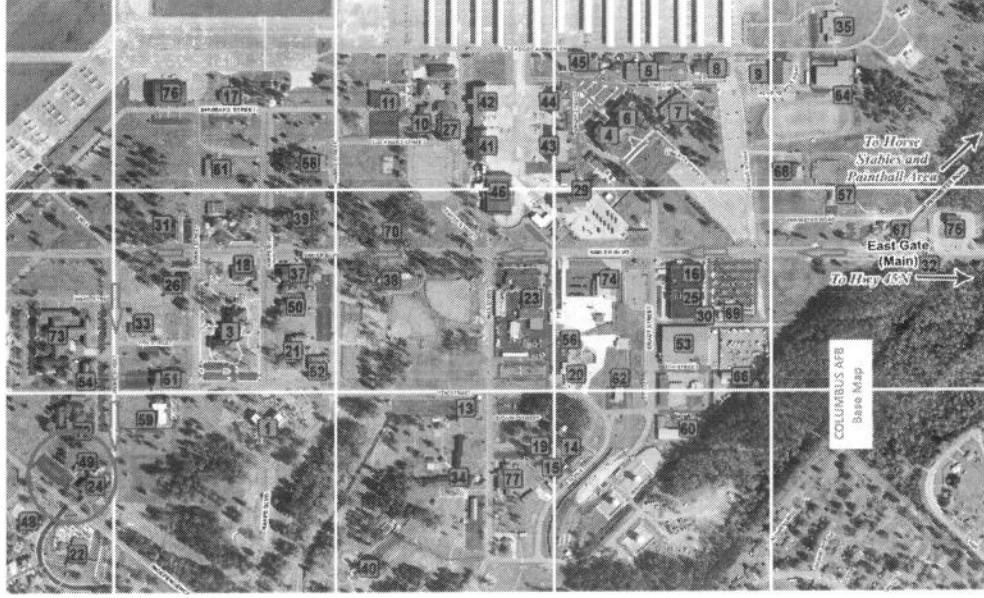
NOT FOR NAVIGATION USE

Day's Events

- 0630 – 0730 Arrival
- 0730 – 0800 Meet at the Columbus Club
- 0800 – 0810 Welcome/ Commander's Welcome
- 0810 – 0820 Mission Brief
- 0820 – 0840 Mid Air Collision Avoidance /
Airspace Brief
- 0840–0850 Break
- 0850 – 1000 FAA Briefs
- 1000 – 1020 Afternoon event's
Brief
- 1020 – 1430 **AFTERNOON EVENTS**
(see opposite flap)
- 1430 – 1445 Farewell and Survey
(Columbus Club)
- 1445 – 1500 Driving guests depart
Departure Brief for Flying
guests
- 1500 – 1530 WX Brief
- 1530 – 1545 Buses to Base Ops /
Aircraft Depart

Afternoon Events

TIMES	GROUP A	GROUP B	GROUP C
1030	Bus to Sim	Bus to RAPCON	Bus to Statics / Lunch
1040	Sim	RAPCON	Statics / Lunch
1050			
1100			
1110			
1120		Bus to Sim	
1130		Sim	
1140			
1150	Bus to Statics		
1200	Statics / Lunch		
1210			Bus to RAPCON
1220			RAPCON
1230			
1240		Bus to Statics	
1250		Statics / Lunch	
1300			Bus to Sim
1310			Sim
1320			
1330	Bus to RAPCON		
1340	RAPCON		
1350			
1400			
1410			
1420	Bus to Kaye	Bus to Kaye	Bus to Kaye
1430			



Drive-In Directions

- Enter Main Gate
- Continue on Simler Blvd.
- Turn Left on Webb Street
- Turn Right on Independence Street
- Columbus Club on Right
- “Follow Event Signs”