

**DEPARTMENT OF TRANSPORTATION  
Federal Aviation Administration**

FAA Anchorage ARTCC  
700 N Boniface Pkwy.  
Anchorage, AK 99506

Issued: 03/24/2021 2259 (UTC) FAA Anchorage ARTCC

Effective: 03/30/2021 1200 (UTC)  
Letter to Airmen: LTA-ZAN-4

Subject: Long Range Discrimination Radar Temporary Flight Restriction  
Cancellation: 03/23/2023 1200 (UTC)

Starting on March 31, there will be a Temporary Flight Restriction (TFR) activated in the vicinity of Clear Air Force Station, Clear, Alaska. The TFR/s will be activated via the NOTAM system and times/days of operation will vary throughout the week.

There are two (2) separately published NOTAMs associated with this TFR. The activation status of the TFR/s is dependent on testing and is subject to cancellation/change, check the NOTAM status often.

Image 1 below shows the current R-2206 Restricted Area which remains activated as published. The purple area represents the TFRs that will be NOTAMed starting in April 2021.

Contact Anchorage ARTCC, Airspace and Procedures at 907-269-1210 or 907-269-2730 for questions regarding this information.

Below are examples of the two TFRs that will be utilized when the area is NOTAMed active.

**This example shows the TFR (TFR 1) being activated on a daily basis from 1559-0800L, Sunday through Saturday:**

**See Image 2 Below.**

!FDC Y/NNNN ZAN AK..AIRSPACE CLEAR, AK-TEMPORARY FLIGHT RESTRICTIONS.

MARCH 31, 2021-SEPTEMBER 30, 2021 LOCAL. PURSUANT TO 49 USC 40103(B)(3), THE FEDERAL AVIATION ADMINISTRATION (FAA) CLASSIFIES THE AIRSPACE DEFINED IN THIS NOTAM AS 'NATIONAL DEFENSE AIRSPACE'. PILOTS WHO DO NOT ADHERE TO THE FOLLOWING PROCEDURES MAY BE INTERCEPTED, DETAINED AND INTERVIEWED BY LAW ENFORCEMENT/SECURITY PERSONNEL. ANY OF THE FOLLOWING ADDITIONAL ACTIONS MAY ALSO BE TAKEN AGAINST A PILOT WHO DOES NOT COMPLY WITH THE REQUIREMENTS OR ANY SPECIAL INSTRUCTIONS OR PROCEDURES ANNOUNCED IN THIS NOTAM:

A) THE FAA MAY TAKE ADMINISTRATIVE ACTION, INCLUDING IMPOSING CIVIL PENALTIES AND THE SUSPENSION OR REVOCATION OF AIRMEN CERTIFICATES; OR  
B) THE UNITED STATES GOVERNMENT MAY PURSUE CRIMINAL CHARGES, INCLUDING CHARGES UNDER TITLE 49 OF THE UNITED STATES CODE, SECTION 46307; OR  
C) THE UNITED STATES GOVERNMENT MAY USE DEADLY FORCE AGAINST THE AIRBORNE AIRCRAFT, IF IT IS DETERMINED THAT THE AIRCRAFT POSES AN IMMINENT SECURITY THREAT.

PURSUANT TO TITLE 14 CFR SECTION 99.7, SPECIAL SECURITY INSTRUCTIONS, ALL ACFT FLT OPS ARE PROHIBITED:

WI AN AREA BOUNDED BY 642013N/1491312W (ENN173015.7) TO 641720N/1491125W (ENN169018.4) TO 641431N/1491343W (ENN170021.3) THEN CLOCKWISE ON A 3 NM ARC CENTERED ON 641720N/1491125W (ENN169018.4) TO POINT OF ORIGIN 1000FT MSL-1599FT MSL  
EFFECTIVE 2103312359 UTC (1559 LOCAL 03/31/21) UNTIL 2110011600 UTC (0800 LOCAL 10/01/21)  
DLY 2359-1600 UTC (1559-0800 LOCAL).

WI AN AREA BOUNDED BY 641927N/1492022W (ENN183017.4) THEN CLOCKWISE ON A 4 NM ARC CENTERED ON 642022N/1491125W (ENN170015.4) TO 642356N/1491530W (ENN182012.5) TO 641720N/1491125W (ENN169018.4) TO 641410N/1491401W (ENN170021.7) THEN CLOCKWISE ON A 3 NM ARC CENTERED ON 641655N/1491641W (ENN175019.3) TO POINT OF ORIGIN 1600FT MSL-FL320  
EFFECTIVE 2103312359 UTC (1559 LOCAL 03/31/21) UNTIL 2110011600 UTC (0800 LOCAL 10/01/21)  
DLY 2359-1600 UTC (1559-0800 LOCAL).

WI AN AREA BOUNDED BY 642356N/1491530W (ENN182012.5) THEN CLOCKWISE ON A 4 NM ARC CENTERED ON 642022N/1491125W (ENN170015.4) TO 641929N/1490227W (ENN156016) TO 641720N/1491125W (ENN169018.4) TO THE POINT OF ORIGIN 2100FT MSL-FL320;  
EXCLUDING AN AREA DEFINED AS 642207N/1490309W (ENN157013.3) THEN CLOCKWISE ON A 4 NM ARC CENTERED ON 642022N/1491125W (ENN170015.4) TO 641929N/1490227W (ENN156016) TO 641919N/1490307W (ENN157016.1) TO 641936N/1490318W (ENN156015.5) TO 642049N/1490344W (ENN158014.6) TO 642142N/1490337W (ENN158014) TO POINT OF ORIGIN 2100FT MSL-3200FT MSL  
EFFECTIVE 2103312359 UTC (1559 LOCAL 03/31/21) UNTIL 2110011600 UTC (0800 LOCAL 10/01/21)  
DLY 2359-1600 UTC (1559-0800 LOCAL).

EXC AS SPECIFIED BLW AND/OR UNLESS AUTH BY ATC:

1. THESE RESTRICTIONS EXCLUDE THAT PORTION OF AIRSPACE WHOLLY CONTAINED IN R-2206A WHEN ACTIVE.
  2. ALL ACFT ENTERING OR EXITING THE TFR MUST BE ON A DISCRETE CODE ASSIGNED BY AN AIR TRAFFIC CONTROL (ATC) FACILITY.
  3. AIRCRAFT MUST BE SQUAWKING THE DISCRETE CODE AT ALL TIMES WHILE IN THE TFR.
  4. ALL AIRCRAFT ENTERING OR EXITING THE TFR MUST REMAIN IN TWO-WAY RADIO COMMUNICATIONS WITH ATC.
  5. ANCHORAGE /ZAN/ ARTCC, TEL 907-269-1103, IS THE FAA CDN FACILITY.
- 2103312359-2110011600

**This example shows a second TFR (TFR 2) being activated on Tuesday, Thursday, and Saturday from 0200-0400L. It includes an additional area near the Parks highway from 3200 MSL to the surface.**

**See Image 3 Below.**

!FDC Y/NNNN ZAN AK..AIRSPACE CLEAR, AK..TEMPORARY FLIGHT RESTRICTIONS.

MARCH 31, 2021-SEPTEMBER 30, 2021 LOCAL. PURSUANT TO 49 USC 40103(B)(3), THE FEDERAL AVIATION ADMINISTRATION (FAA) CLASSIFIES THE AIRSPACE DEFINED IN THIS NOTAM AS 'NATIONAL DEFENSE AIRSPACE'. PILOTS WHO DO NOT ADHERE TO THE FOLLOWING PROCEDURES MAY BE INTERCEPTED, DETAINED AND INTERVIEWED BY LAW ENFORCEMENT/SECURITY PERSONNEL. ANY OF THE FOLLOWING ADDITIONAL ACTIONS MAY ALSO BE TAKEN AGAINST A PILOT WHO DOES NOT COMPLY WITH THE REQUIREMENTS OR ANY SPECIAL INSTRUCTIONS OR PROCEDURES ANNOUNCED IN THIS NOTAM:

A) THE FAA MAY TAKE ADMINISTRATIVE ACTION, INCLUDING IMPOSING CIVIL PENALTIES AND THE SUSPENSION OR REVOCATION OF AIRMEN CERTIFICATES; OR  
B) THE UNITED STATES GOVERNMENT MAY PURSUE CRIMINAL CHARGES, INCLUDING CHARGES UNDER TITLE 49 OF THE UNITED STATES CODE, SECTION 46307; OR  
C) THE UNITED STATES GOVERNMENT MAY USE DEADLY FORCE AGAINST THE AIRBORNE AIRCRAFT, IF IT IS DETERMINED THAT THE AIRCRAFT POSES AN IMMINENT SECURITY THREAT.

PURSUANT TO TITLE 14 CFR SECTION 99.7, SPECIAL SECURITY INSTRUCTIONS, ALL ACFT FLT OPS ARE PROHIBITED:

WI AN AREA BOUNDED BY 642013N/1491312W (ENN173015.7) THEN CLOCKWISE ON A 3 NM ARC CENTERED ON 641720N/1491125W (ENN169018.4) TO 641847N/1490523W (ENN160016.6) TO 641720N/1491125W (ENN169018.4) TO POINT OF ORIGIN 1000FT MSL-1599FT MSL EFFECTIVE 21004011000 UTC (0200 LOCAL 04/01/21) UNTIL 2110011200 UTC (0400 LOCAL 10/01/21)  
TUE THU SAT 1000-1200 UTC (0200-0400 LOCAL).

WI AN AREA BOUNDED BY 642356N/1491530W (ENN182012.5) THEN CLOCKWISE ON A 4 NM ARC CENTERED ON 642022N/1491125W (ENN170015.4) TO 641929N/1490227W (ENN156016) TO 641720N/1491125W (ENN169018.4) TO POINT OF ORIGIN 1600FT MSL-2099FT MSL EFFECTIVE 21004011000 UTC (0200 LOCAL 04/01/21) UNTIL 2110011200 UTC (0400 LOCAL 10/01/21)  
TUE THU SAT 1000-1200 UTC (0200-0400 LOCAL).

WI AN AREA BOUNDED BY 642207N/1490309W (ENN157013.3) THEN CLOCKWISE ON A 4 NM ARC CENTERED ON 642022N/1491125W (ENN170015.4) TO 641929N/1490227W (ENN156016) TO 641919N/1490307W (ENN157016.1) TO 641936N/1490318W (ENN156015.5) TO 642049N/1490344W (ENN158014.6) TO 642142N/1490337W (ENN158014) TO POINT OF ORIGIN 2100FT MSL-3200FT MSL EFFECTIVE 21004011000 UTC (0200 LOCAL 04/01/21) UNTIL 2110011200 UTC (0400 LOCAL 10/01/21)  
TUE THU SAT 1000-1200 UTC (0200-0400 LOCAL).

EXC AS SPECIFIED BLW AND/OR UNLESS AUTH BY ATC:





Image 2: TFR 1

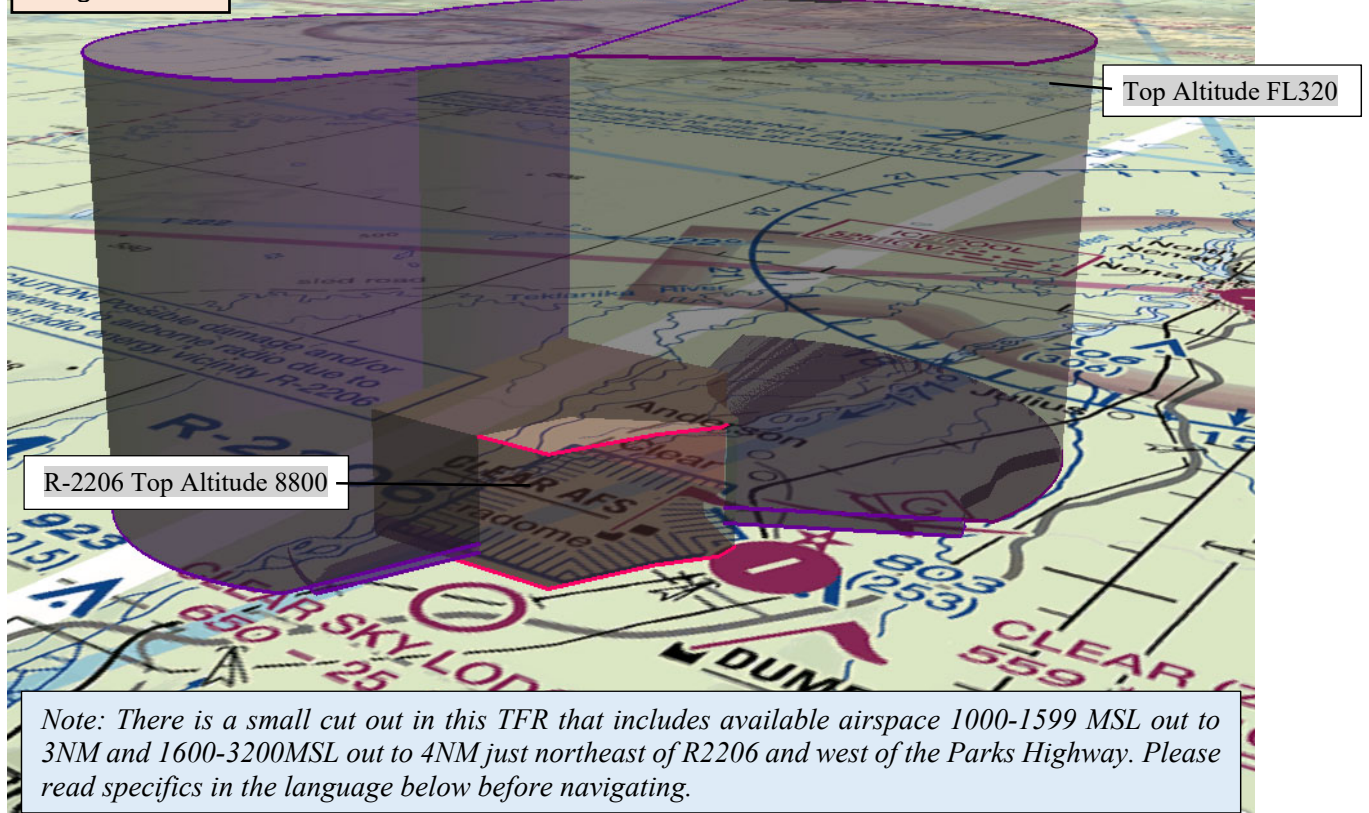


Image Landsat / Copernicus

Image 3: TFR 2

